



MEMORANDUM

Date: Jan 8, 2024

To: Baxter State Park Authority

From: Park Director Kevin Adam

Subject: Park Operational Updates for 01-12-2024 Authority Meeting

BSP Personnel: Interviews are ongoing for the Park Services Manager and the Human Resource Administrator positions. Daicey Maintenance Project Manager interviews are being set up and will start soon.

An email went out to seasonal staff asking them to indicate if they plan to keep their position and return this spring or terminate their position. We posted anticipatory openings for Campground Ranger and Customer Representative to be prepared for any openings for seasonal employees who are not returning.

Every department has been going through the BSP policies and procedures manual, making additions, deletions, and suggestions to these important documents.

Committees:

- BSP Advisory: Meetings are scheduled for the Commercial Use Sub-Committee and Statement of Purpose Sub-Committee.
- SFMA Advisory: No activity this month
- Research Committee: Applications to conduct research permits are to be submitted by Feb 1.
- Investment Committee: Phone call about deeper dive into private equity.

Human Resources:

The Park is actively recruiting for the following open positions: Human Resources Administrator (Interim Lori Morrison), Park Services Manager (Interim Lori Morrison), Maintenance Project Manager, Trail Crew member, Interpretive Intern, and anticipated vacancies for Campground Ranger(s) and Customer Representative.

Reservations:

The winter lottery was held on 11/1/2023 followed by acceptance of commercial applications on 11/2/2023. The following represents reservations processed on 11/1/2023 and 11/2/2023 and a comparison of the same period in 2022.

Winter Lottery / Winter Usage

11/1 Lottery Winter Reservations	Total Reservations on 11/1	In-Person	Received by Mail
2023	174	91	83
2022	83	56	27

11/2 Commercial Use Permits	Total Reservations on 11/2
2023	13
2022	9

Revenue 11/1-11/2 *Includes commercial	
2023	\$ 88,779
2022	\$ 73,147

Notes:

- Chimney Pond bunkhouse is most requested. Bunkhouse is booked for January - March.
- Other very popular sites: bunkhouses throughout the Park, and the available winter cabins at Daicey Pond and Kidney Pond.
- Abol campground is very popular for commercial groups and others, as it is the quickest way to get to the summit in the winter and can be accessed by snowmobile.

Communications/ Security/ Infrastructure:

As of 1/1/2024, Tim Deetz, Management Analyst II, supporting the Park's Networking, IT, and Data Analytics, transitioned from employed status to self-employment under his newly established limited liability corporation, Buckeye Professional Technology Solutions, LLC. Tim will continue to provide the Park with the same level of services but now under the terms of a Service Agreement with the Park.

Financial:

FY24, Q2 financial position:

Note: tracked as expected

Revenue:

- \$1,336,324.67- 3.3% positive variance over 2022.
Note: Year-over-year favorable variance primarily due to the increase in the annual distribution fund from the Baxter Park Wilderness Fund Trust.

Expenses:

- Personnel expense: \$923,625.35 - under budget, 14.9% positive variance.
Note: Vacant positions
- All Other expenses: \$289,974.88 - under budget, 40% positive variance.
Note: Timing of expense.
- Capital expense: \$71,625.38
Note: Q1 Capital expense \$8,932.57 was not reflected in my Q1 report.
YTD Capital Expense \$80,558, 21% of budget thru Q2.

Q2 Revenue less Expenditures \$51,099.06

YTD Revenue less Expenditures \$(50,869.19)

Note: The timing of funding for the Daicey Pond project from endowment, and funding from balance forward impacts the YTD net loss.

Information and Education:

Cassandra is working on creating new signs, editing existing signs, and finalizing sign inventory for information that we intend to make standard across all Baxter State Park campgrounds and day-use bulletin boards. She also has worked on researching information on the Park's history and animals that live in the Park to create new displays for the Visitor Center.

Cassandra has been reviewing applications for the 2024 Interpretive Interns and has started the process of interview invitations.

Trails:

Most trails weathered the storm. There was some damage to the Boardwalk at Grassy Pond. We are advising hikers to take the Blueberry Ledges Trail until this issue is resolved, which is set for early summer 2024.



Grassy Pond Boardwalk

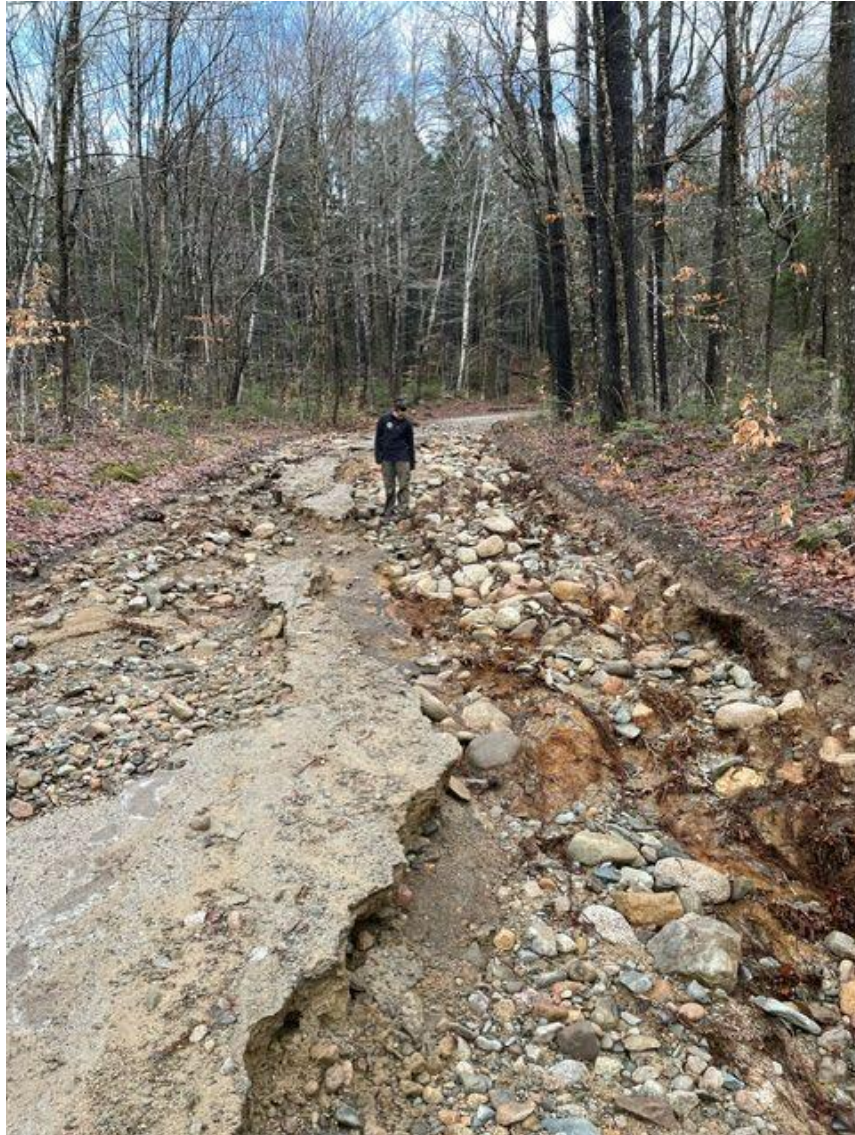
Maintenance:

It has been a busy couple of weeks here at the Park. On Monday, Dec 11 we received a big storm that had enough warm air to give most of the state of Maine 2-3 inches of rain. This storm had very light inland winds and the Park came through it relatively unscathed.

On Monday, Dec 18 Maine received what normally this time of year would have been a significant snowfall. Instead, southerly tropical winds carried this storm and dumped another 2-4 inches of rain and this time brought 40-70 mph gusts inland. The Park roads suffered significant but not

major damage. The rest of Maine suffered major damage to roads and electricity.

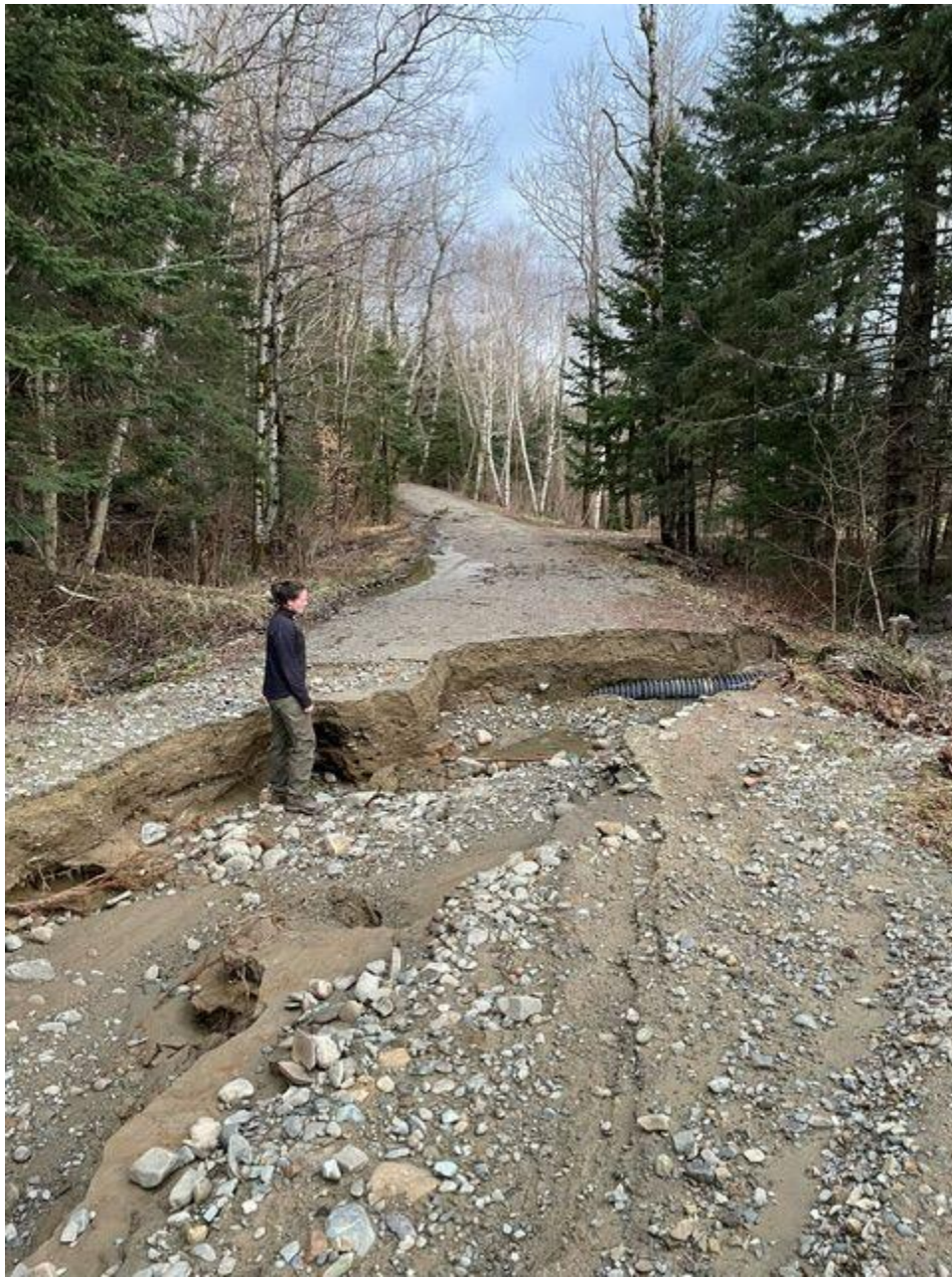
Images of storm damage in the Park:



Bruce White on the Roaring Brook Road



Katahdin Stream near Birches



Justine Rumaker near Nesowadnehunk



Lean-to at Nesowadnehunk Campground.



When Rip Dam releases three times the normal amount of water.

SFMA:

Our harvesting crew has moved to the north end, while trucking is still being completed from the south end. Shane has been working to market the wood we are cutting this winter, and we are continuing to work on the management plans.

Search and Rescue:

No activity.

Law Enforcement: Enforcement Rangers have been assisting with the road's cleanup. Rangers cleaned up all the blowdowns that occurred mostly in the north end of the Park, and have been monitoring ice conditions and any fishing activity on the lakes.



View from Hamlin Trail by Winter Ranger Jen Sinsabaugh.



View from top of Katahdin, above the clouds by Andy Borth Winter Campground Ranger - Abol Campground.