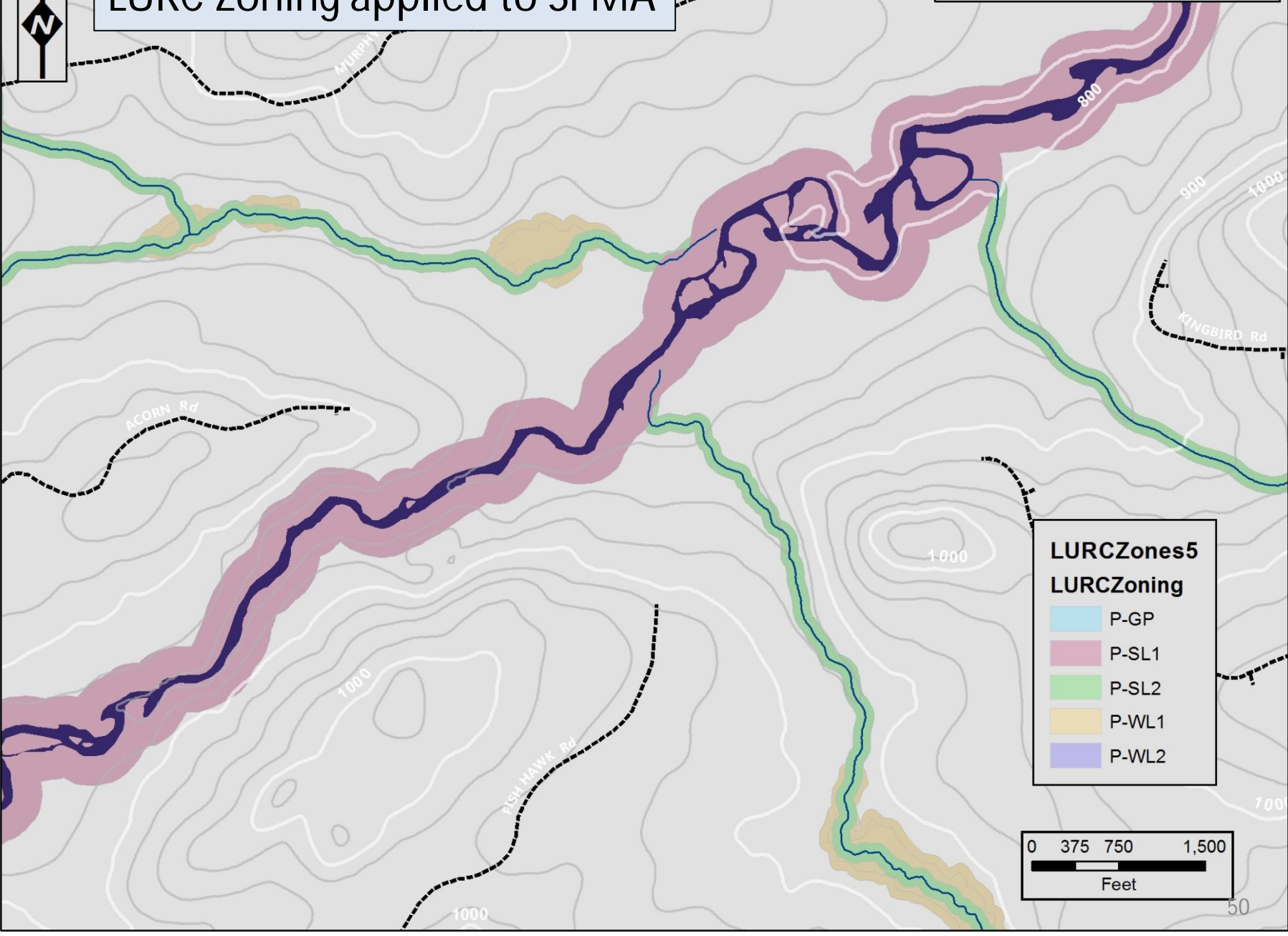


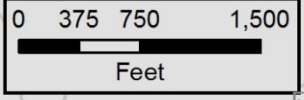
LURC Zoning applied to SFMA

SFMA RMZ Discussion 2013



LURCZones5
LURCZoning

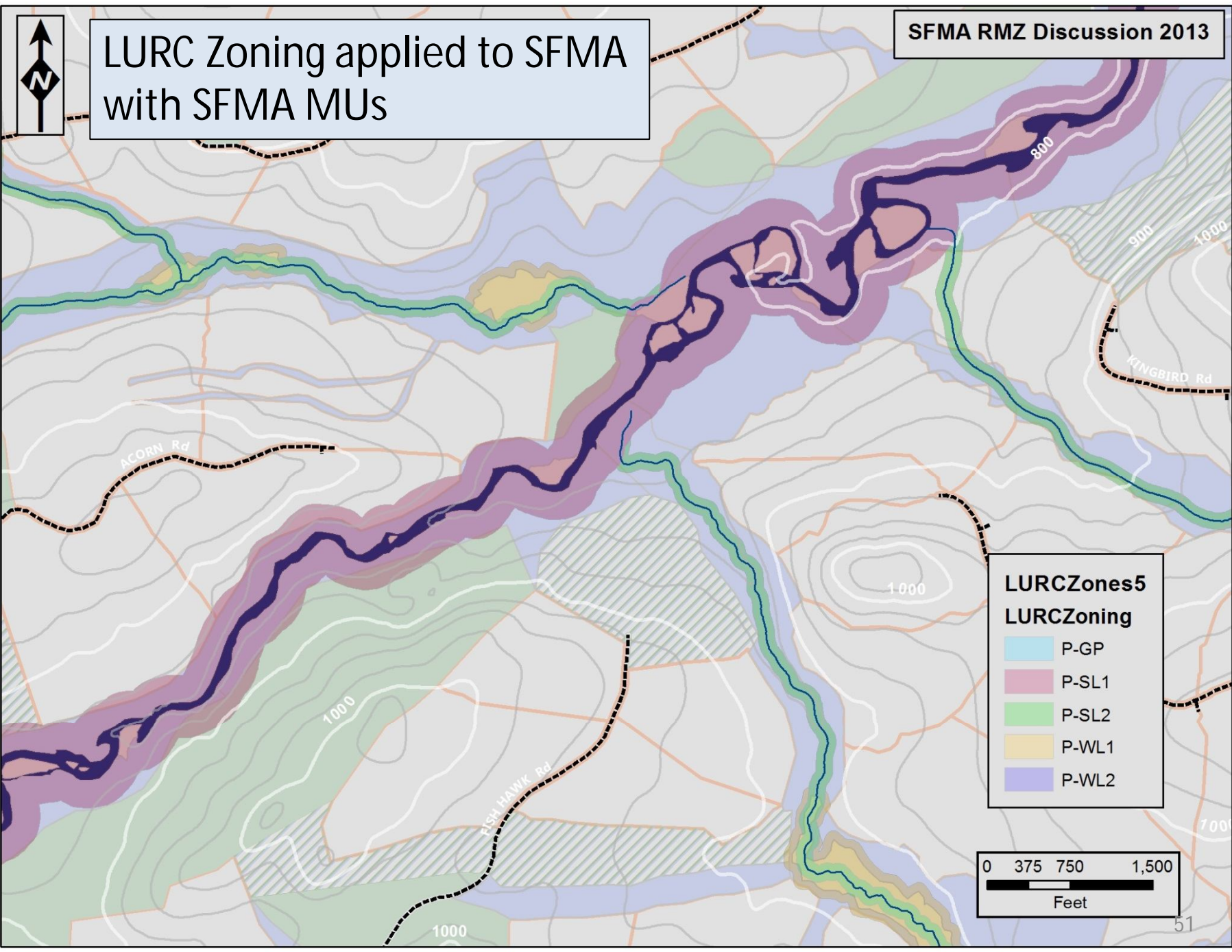
- P-GP
- P-SL1
- P-SL2
- P-WL1
- P-WL2





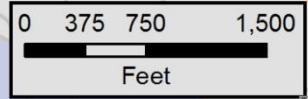
LURC Zoning applied to SFMA with SFMA MUs

SFMA RMZ Discussion 2013



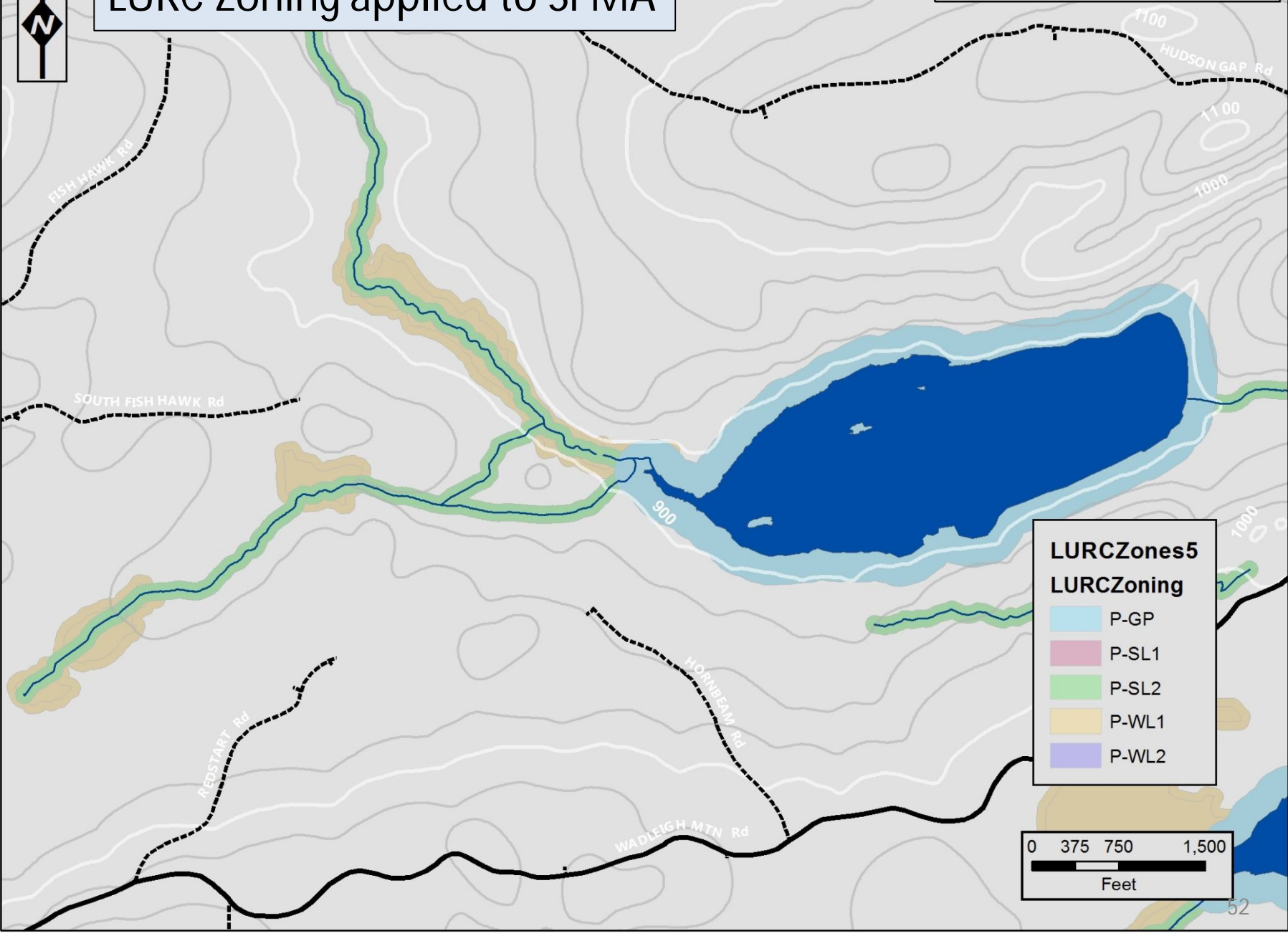
LURC Zones 5
LURC Zoning

- P-GP
- P-SL1
- P-SL2
- P-WL1
- P-WL2



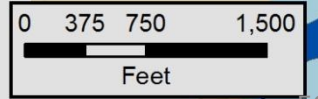
LURC Zoning applied to SFMA

SFMA RMZ Discussion 2013



LURCZones5
LURCZoning

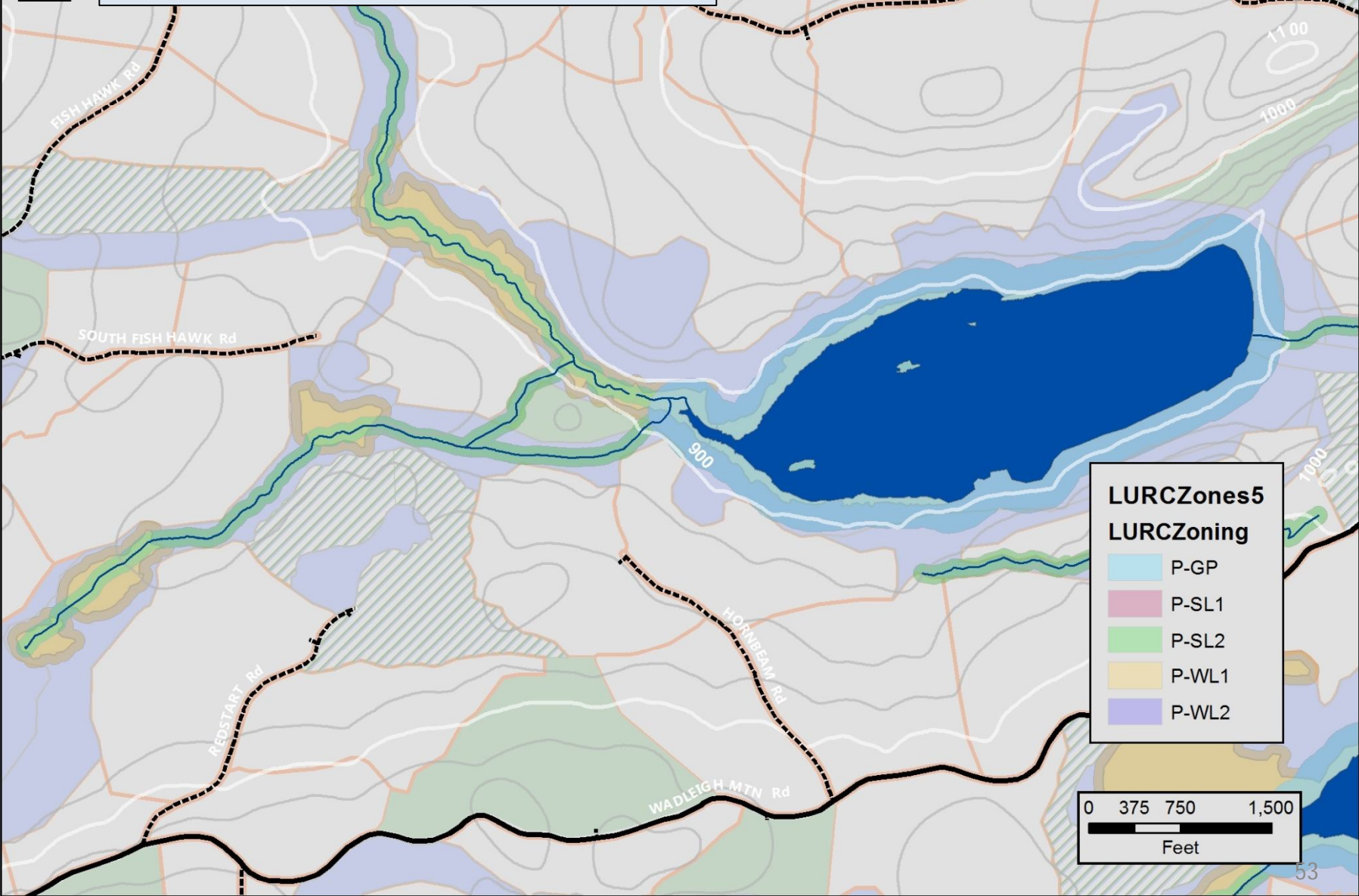
- P-GP
- P-SL1
- P-SL2
- P-WL1
- P-WL2





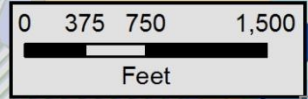
LURC Zoning applied to SFMA with SFMA MUs

SFMA RMZ Discussion 2013



LURC Zones 5
LURC Zoning

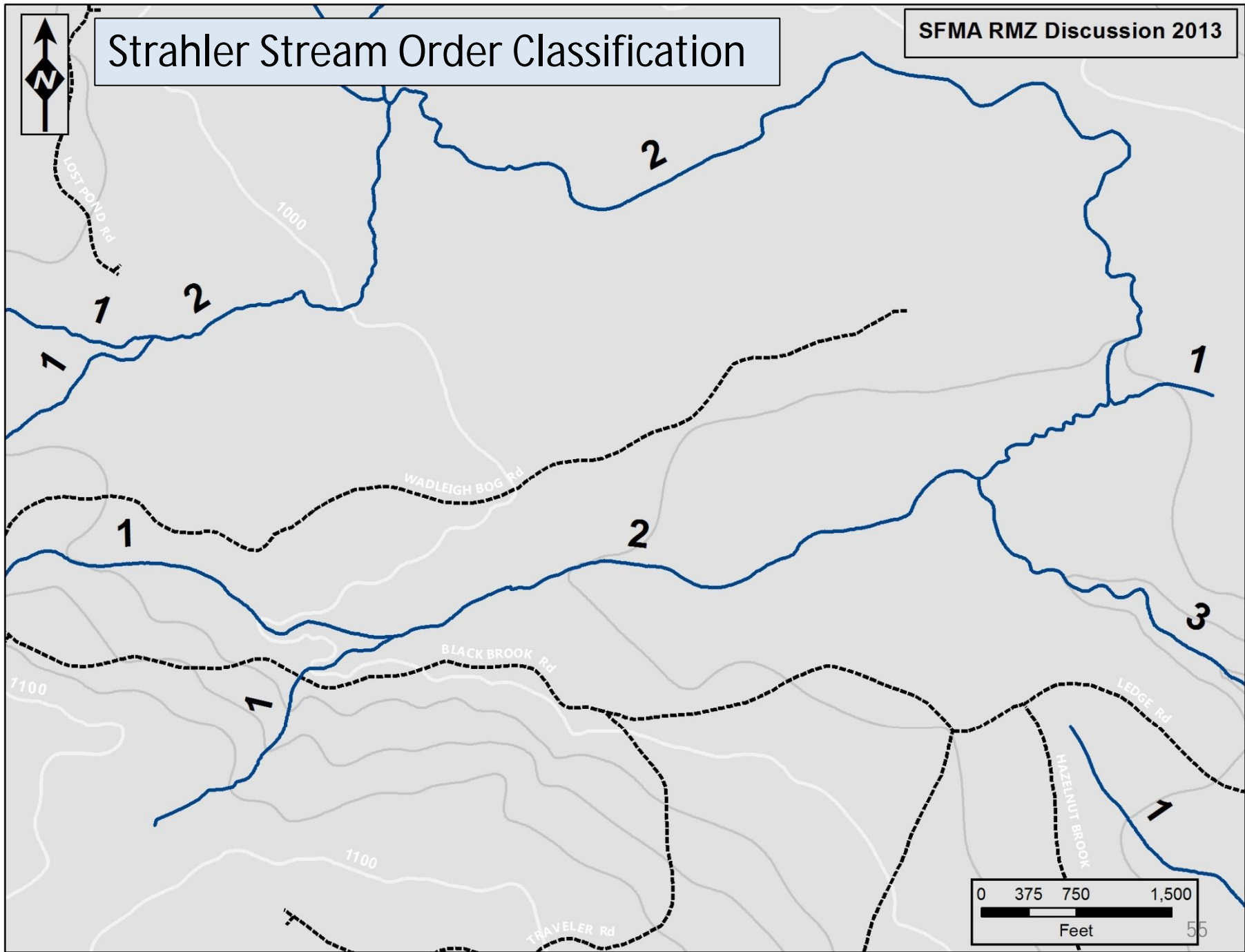
- P-GP
- P-SL1
- P-SL2
- P-WL1
- P-WL2





Strahler Stream Order Classification

SFMA RMZ Discussion 2013



Riparian Feature Specific Management Guidelines

Category 1: Ephemeral wetlands, intermittent streams, hillside seeps, other unique hydrologic features.

- **No equipment entry within 25-50+ft of riparian feature edge.**
- Minimize presence of hard stand boundary when RMZ is adjacent to even-age management unit, by feathering stand edge. (Ideally use individual tree marking to accomplish feathered result leaving 60-70% crown closure)

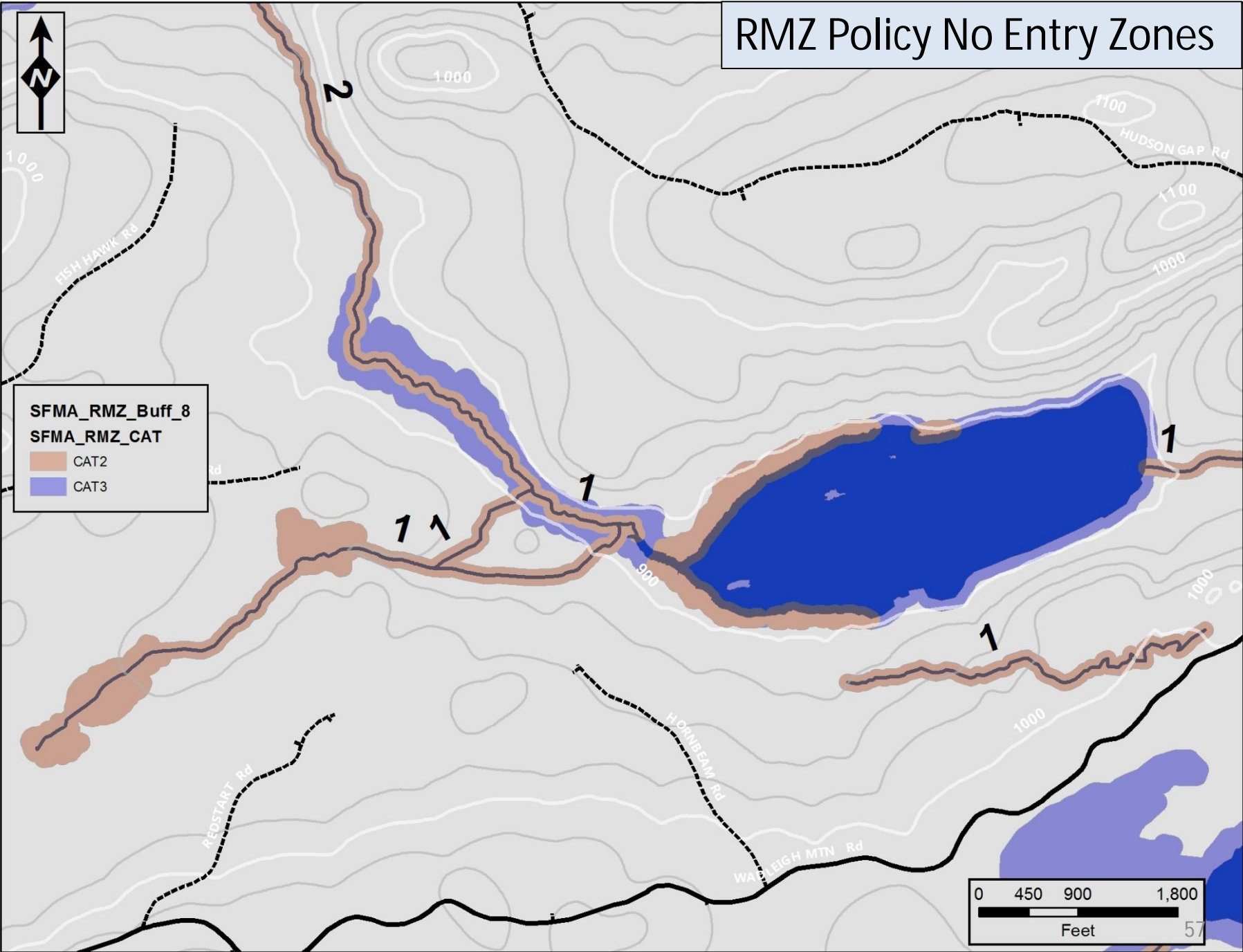
Category 2: All ponds, wetlands, and pond/wetland complexes less than 10 acres in size, all 1st and 2nd order streams.

- **No equipment entry within 75ft of riparian feature edge.**
- Minimize presence of hard stand boundary when RMZ is adjacent to even-age management unit, by feathering stand edge. (Ideally use individual tree marking to accomplish feathered result leaving 60-70% crown closure)
- Consider using multi-age management in RMZ if operational area is large enough to permit reasonable application of silvicultural system.
- Consider ways to integrate RMZ habitat attributes into management activities in adjacent management units.

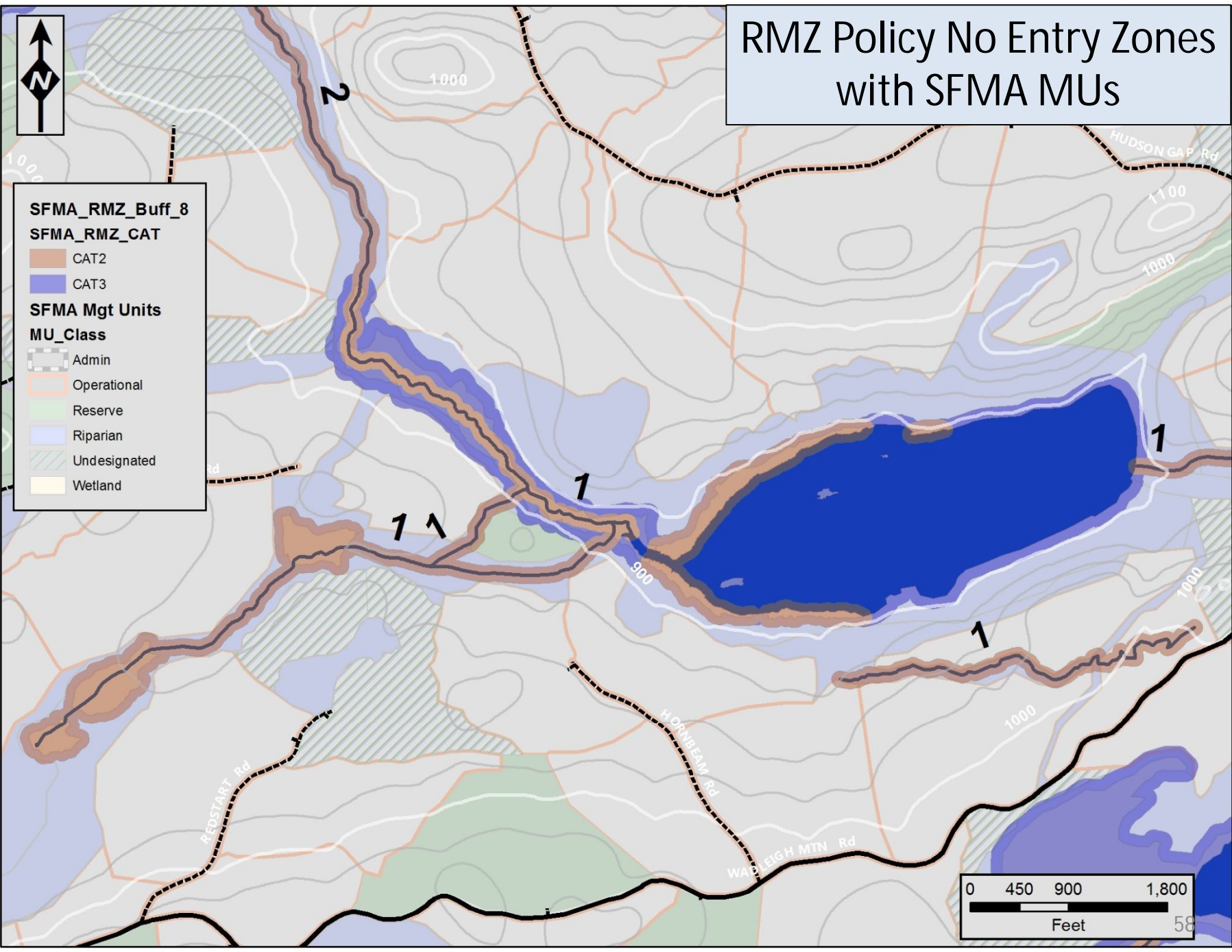
Category 3: All ponds, wetlands, and pond/wetland complexes greater than 10 acres in size, and all 3rd and 4th order streams.

- **No equipment entry within 100ft of riparian feature edge.**
- Minimize presence of hard stand boundary when RMZ is adjacent to even-age management unit, by feathering stand edge of operational unit. (Ideally use individual tree marking to accomplish feathered result leaving 60-70% crown closure)
- Strongly consider using multi-age management in RMZ if area is large enough to permit reasonable application of desired silvicultural system.
- Strongly consider ways to integrate RMZ habitat attributes into management activities in adjacent operational management units.

RMZ Policy No Entry Zones



RMZ Policy No Entry Zones with SFMA MUs



SFMA_RMZ_Buff_8
SFMA_RMZ_CAT
CAT2
CAT3
SFMA Mgt Units
MU_Class
Admin
Operational
Reserve
Riparian
Undesignated
Wetland

