

SFMA Advisory Committee Meeting

May 1, 2014



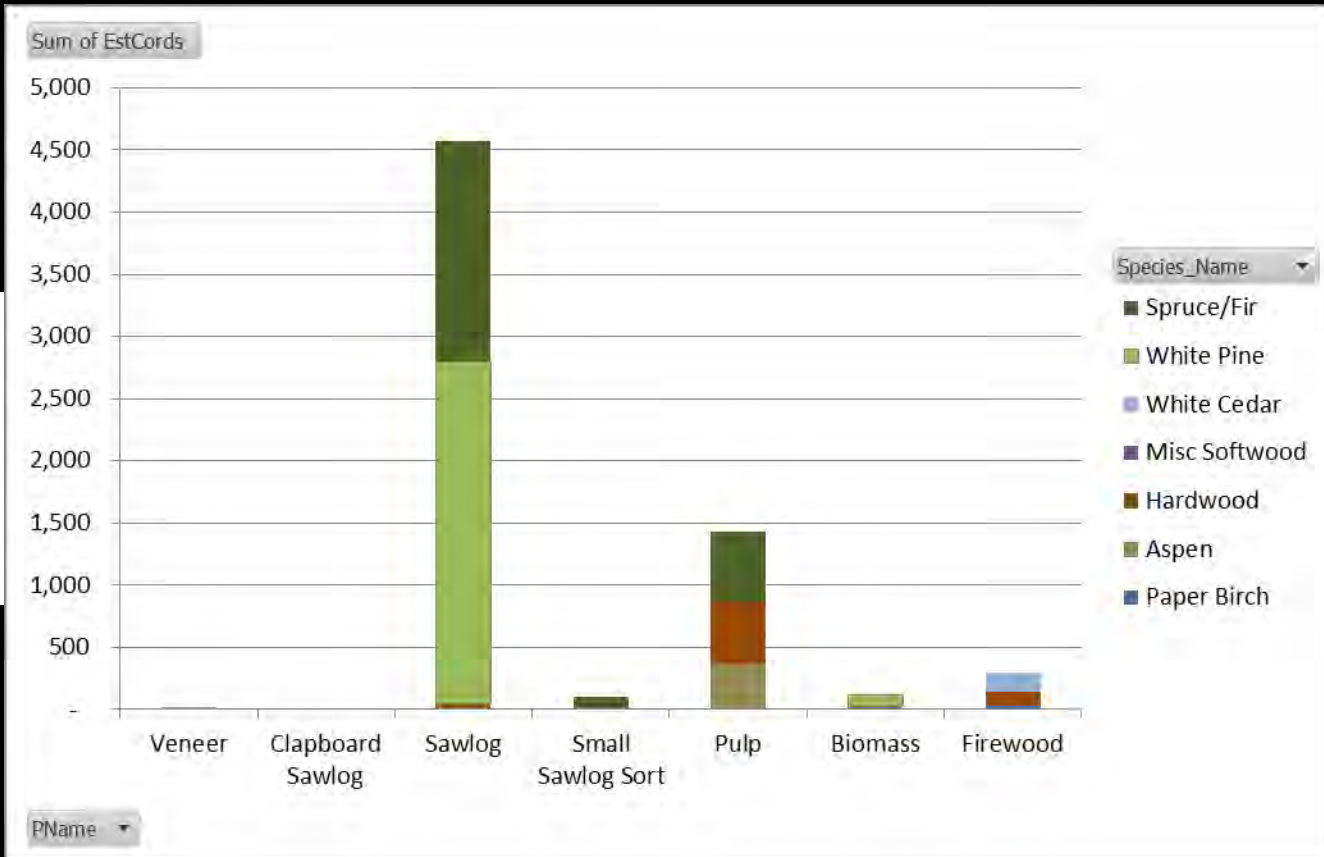
May 1, 2014
Rick Morrill,
BSP Resource Manager



2013/14 Harvest Statistics		Version											
		4/30/2014											
Product Name	Species Name	Net Wt (LBS)	Net Vol (BF)	Cords	Gross Revenue	Service Payment	Bridge Tolls	Road Tolls	BSP Internal Use	*Net Revenue	Profit Margin Vol Weighted	Percent Service Cost of Gross Rev	
Veneer	Aspen	70,780	6,525	16.5	\$ 2,446.88	\$1,476.47	\$7.08	\$89.54	N	\$873.79	36%	64%	
Small Sawlog Sort	Spruce/Fir	448,220	0	105.5	\$ 14,567.15	\$9,712.93	\$44.82	\$640.95	N	\$4,168.45	29%	71%	
Sawlog	Hardwood	229,940	9,263	46.0	\$ 5,000.00	\$4,679.28	\$22.99	\$286.70	N	\$11.03	0%	100%	
Sawlog	Spruce/Fir	8,500	900	2.0	\$ 315.00	\$164.48	\$0.85	\$10.75	Y	\$138.92	44%	56%	
Sawlog	Spruce/Fir	7,546,760	814,533	1,775.7	\$ 306,201.24	\$161,646.44	\$754.68	\$10,720.65	N	\$133,079.48	43%	57%	
Sawlog	White Pine	11,832,376	1,172,718	2,751.7	\$ 393,324.22	\$291,550.60	\$1,183.24	\$15,964.63	N	\$84,625.74	22%	78%	
Clapboard Sawlog	Spruce/Fir	44,800	4,444	10.5	\$ 2,225.69	\$911.68	\$4.48	\$64.06	N	\$1,245.47	56%	44%	
Total Sawlog Values		20,181,376	2,008,383	4,707.9	\$ 724,080.17	\$ 470,141.87	\$ 2,018.14	\$ 27,777.29		\$224,142.87	4.13%	69.04%	
Pulp	Aspen	1,595,040	0	370.9	\$ 39,078.48	\$32,459.06	\$159.50	\$1,842.27	N	\$4,617.64	12%	88%	
Pulp	Hardwood	2,443,970	0	488.8	\$ 52,027.61	\$49,306.92	\$100.85	\$1,751.08	N	\$868.76	2%	98%	
Pulp	Spruce/Fir	2,446,900	0	575.7	\$ 62,395.95	\$60,733.07	\$244.69	\$3,487.01	N	(\$2,068.81)	-3%	103%	
Biomass	Misc Softwood	92,610	0	21.4	\$ 1,203.93	\$1,884.61	\$9.26	\$122.25	N	(\$812.19)	-67%	167%	
Biomass	White Cedar	10,650	0	3.0	\$ 138.45	\$216.73	\$1.07	\$14.06	N	(\$93.40)	-67%	167%	
Biomass	White Pine	403,610	0	93.9	\$ 5,246.93	\$8,051.35	\$40.36	\$523.94	N	(\$3,368.72)	-64%	164%	
Total Pulp Values		6,992,780		1,553.8	\$ 160,091.35	\$ 152,651.74	\$ 555.73	\$ 7,740.60		(\$856.73)	0.11%	100.54%	
Firewood	Hardwood	575,300	0	115.1	\$ 13,346.70	\$11,584.16	\$57.53	\$755.23	Y	\$949.79	7%	93%	
Firewood	Paper Birch	140,000	0	31.1	\$ 3,239.60	\$2,709.00	\$14.00	\$193.73	Y	\$322.87	10%	90%	
Firewood	White Cedar	543,000	0	155.1	\$ 9,307.02	\$10,899.05	\$54.30	\$704.22	Y	(\$2,350.55)	-25%	125%	
Total Misc Product Values		1,258,300		301.3	\$ 25,893.32	\$ 25,192.21	\$ 125.83	\$ 1,653.18		(\$1,077.89)	-3%	104%	
Total All Product Values		28,432,456	2,008,383	6,563.0	\$ 910,064.84	\$ 647,985.82	\$ 2,699.70	\$ 37,171.07		\$222,208.25	2%	76%	
Total All Product Values less BSP		28,432,456	2,008,383	6,563	\$ 884,171.52	\$ 647,985.82	\$ 2,699.70	\$ 37,171.07		\$197,392.83	6%	78%	

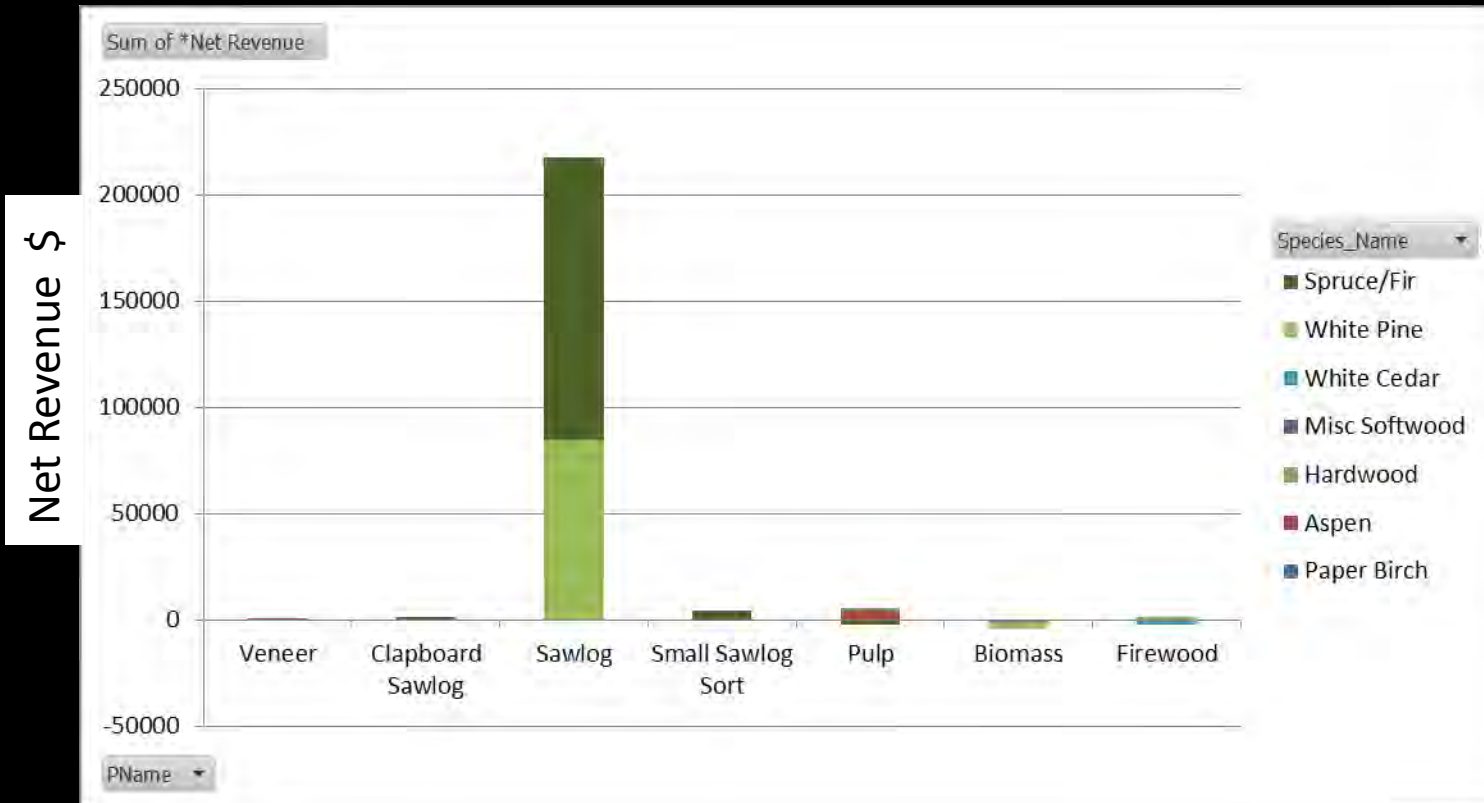
2013/14 Harvest Volume by Species/Product

Harvest Cords



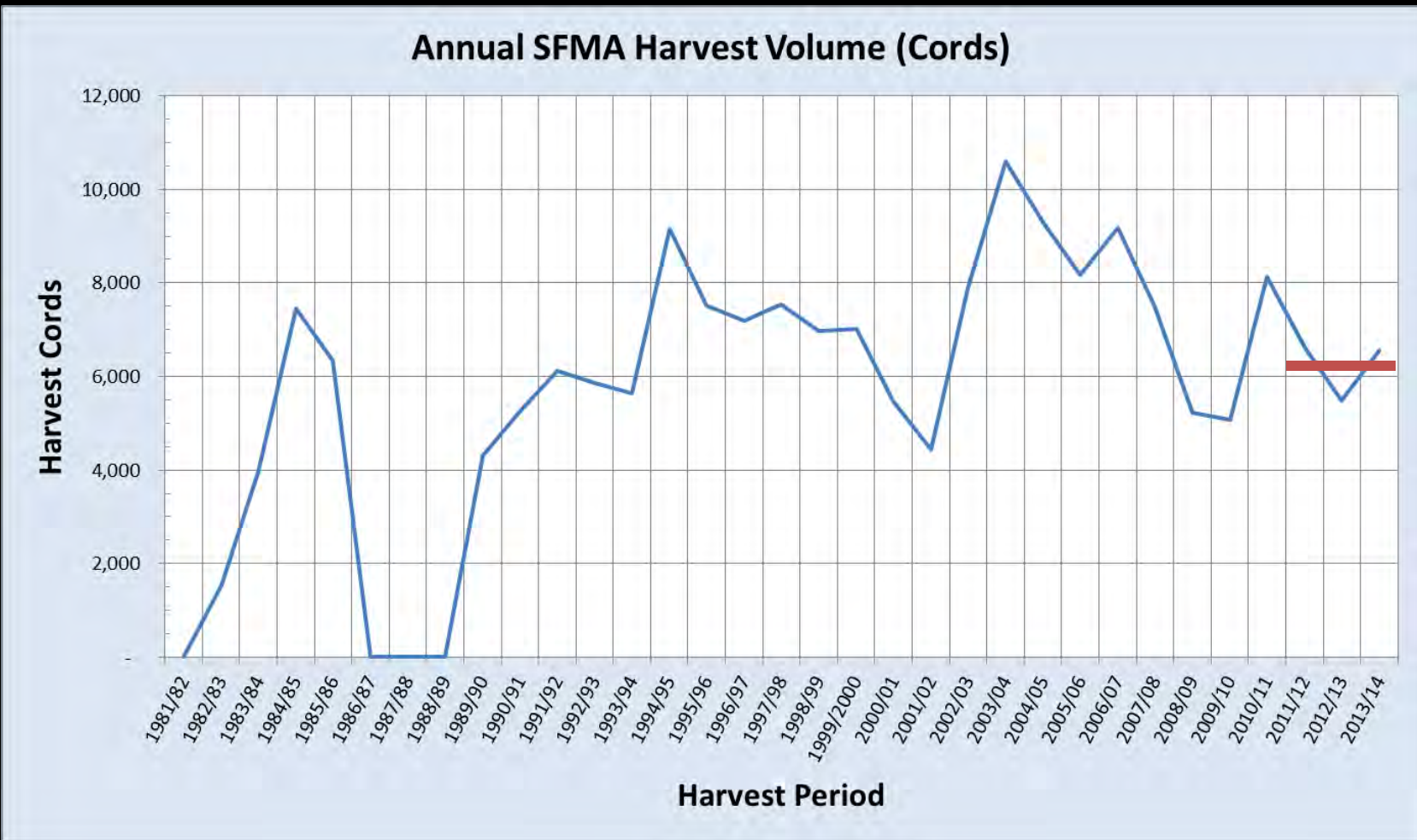
Row Labels	Paper Birch	Aspen	Hardwood	Misc Softwood	White Cedar	White Pine	Spruce/Fir	Grand Total
Veneer		16						16
Clapboard Sawlog							11	11
Sawlog			46			2,752	1,778	4,575
Small Sawlog Sort							105	105
Pulp		371	489				576	1,435
Biomass				21	3	94		118
Firewood	31		115		155			301
Grand Total	31	387	650	21	158	2,846	2,469	6,563

2013/14 Harvest Net Revenue by Species/Product



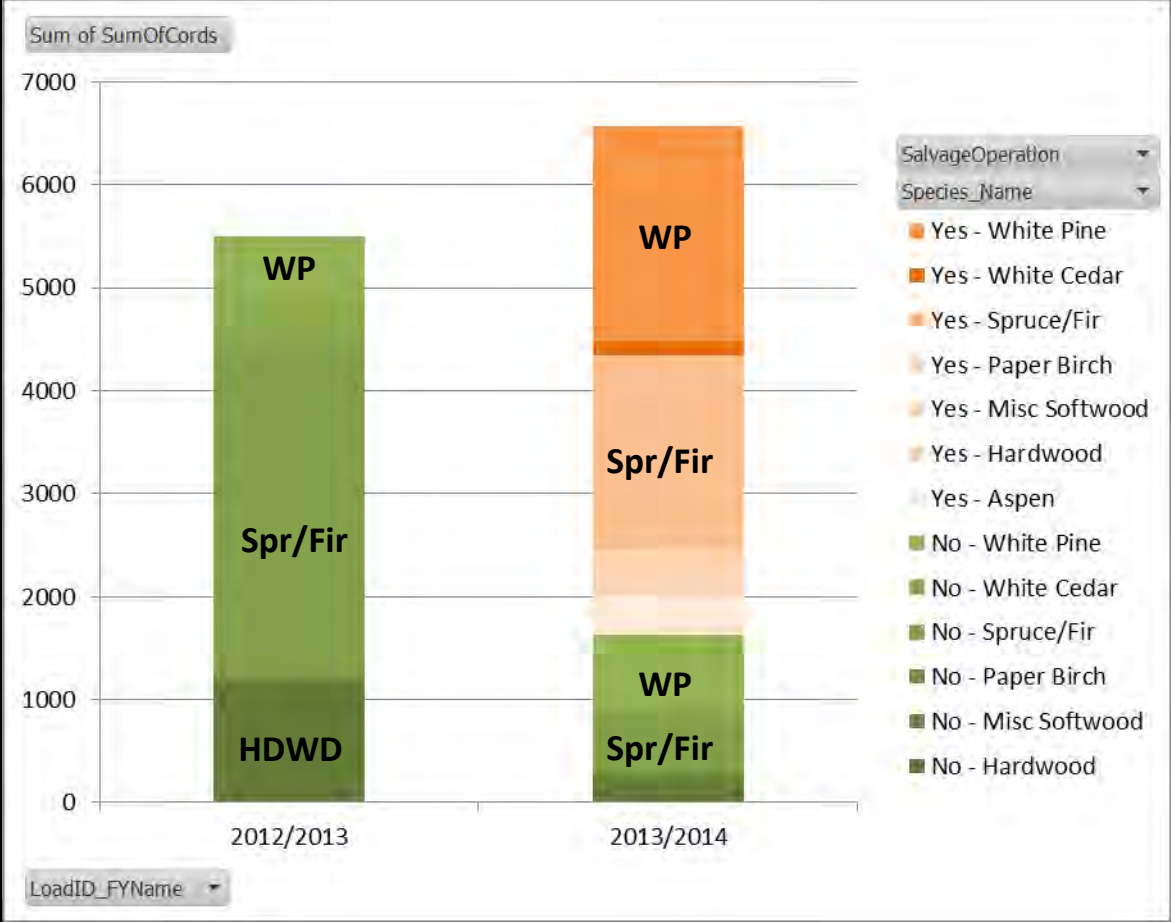
Row Labels	Paper Birch	Aspen	Hardwood	Misc Softwood	White Cedar	White Pine	Spruce/Fir	Grand Total
Veneer		\$ 873.79						\$ 873.79
Clapboard Sawlog							\$ 1,245.47	\$ 1,245.47
Sawlog			\$ 11.03			\$ 84,625.74	\$ 133,218.40	\$ 217,855.17
Small Sawlog Sort							\$ 4,168.45	\$ 4,168.45
Pulp		\$ 4,617.64	\$ 868.76				\$ (2,068.81)	\$ 3,417.59
Biomass				\$ (812.19)	\$ (93.40)	\$ (3,368.72)		\$ (4,274.31)
Firewood	\$ 322.87		\$ 949.79		\$ (2,350.55)			\$ (1,077.89)
Grand Total	\$ 322.87	\$ 5,491.43	\$ 1,829.57	\$ (812.19)	\$ (2,443.95)	\$ 81,257.02	\$ 136,563.50	\$ 222,208.25

Harvest Period	Total Harvest (Cords)
1981/82	-
1982/83	1,538
1983/84	3,968
1984/85	7,449
1985/86	6,338
1986/87	-
1987/88	-
1988/89	-
1989/90	4,305
1990/91	5,244
1991/92	6,124
1992/93	5,861
1993/94	5,646
1994/95	9,155
1995/96	7,511
1996/97	7,191
1997/98	7,546
1998/99	6,976
1999/2000	7,015
2000/01	5,461
2001/02	4,443
2002/03	7,898
2003/04	10,588
2004/05	9,278
2005/06	8,163
2006/07	9,185
2007/08	7,502
2008/09	5,232
2009/10	5,070
2010/11	8,127
2011/12	6,624
2012/13	5,497
2013/14	6,563
Total	191,495
Avg	5,803
Max	10,588
Min	1,538

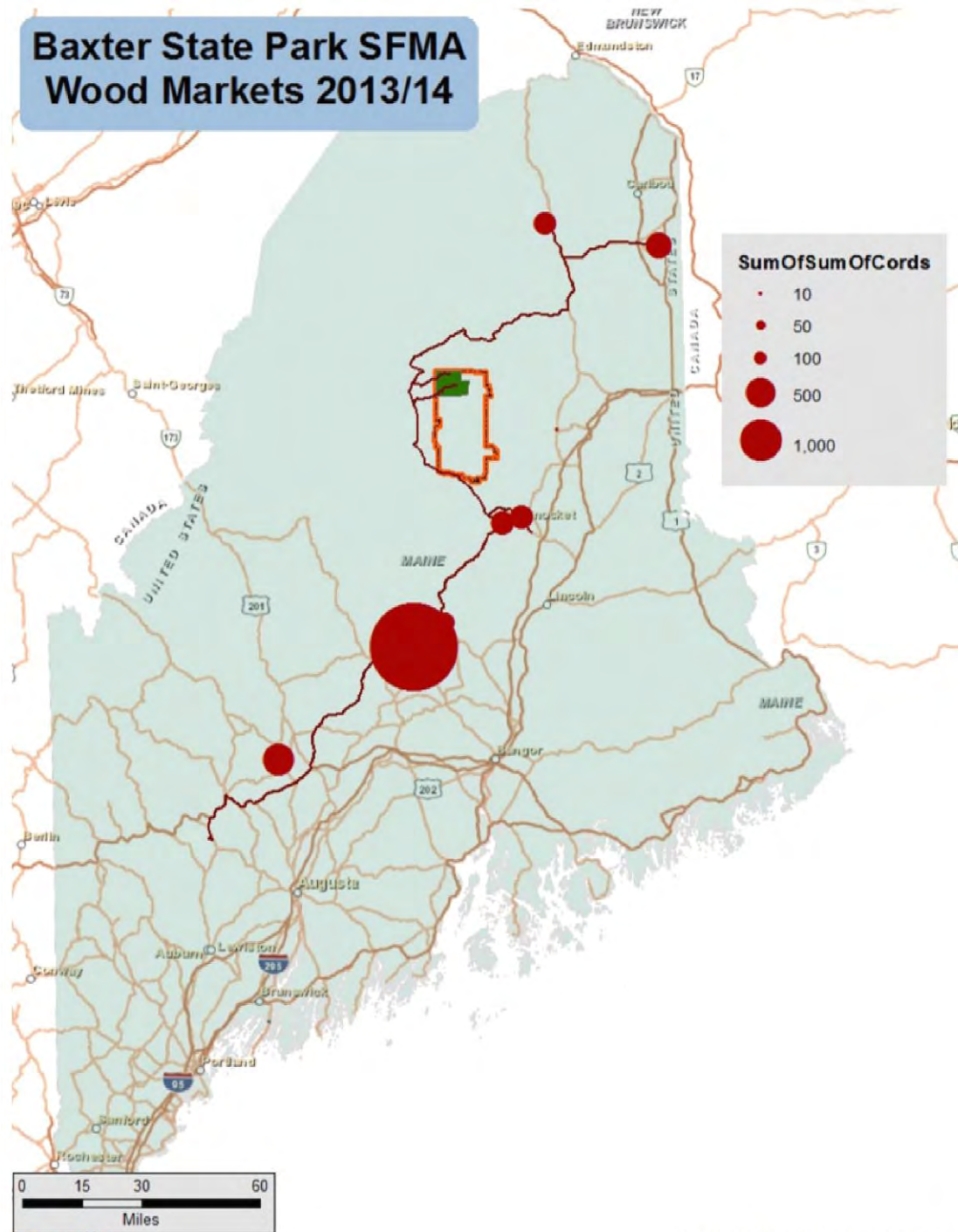


2012/13 & 2013/14 Harvest Volume by Species and Salvage Op

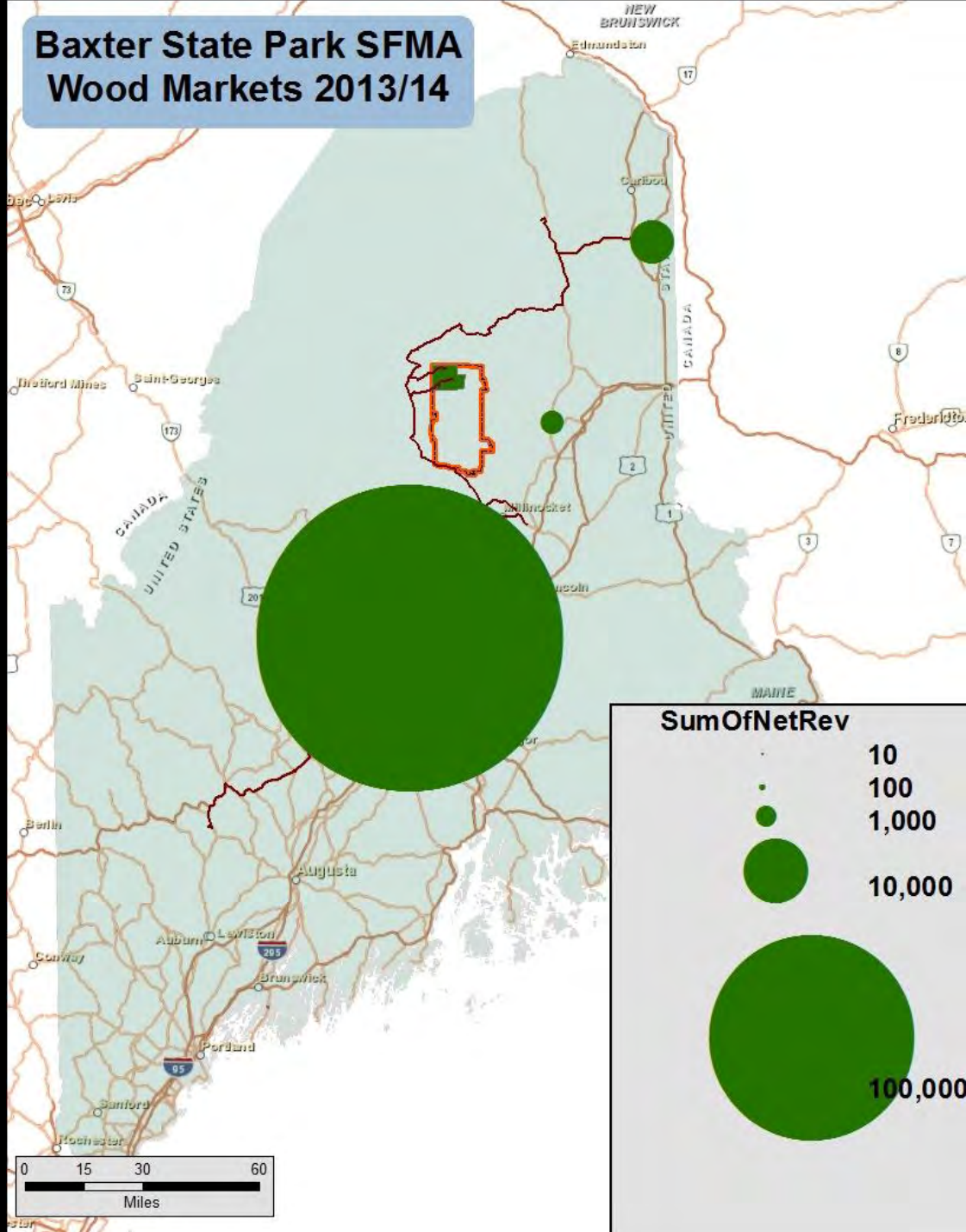
Harvest Cords



Baxter State Park SFMA Wood Markets 2013/14

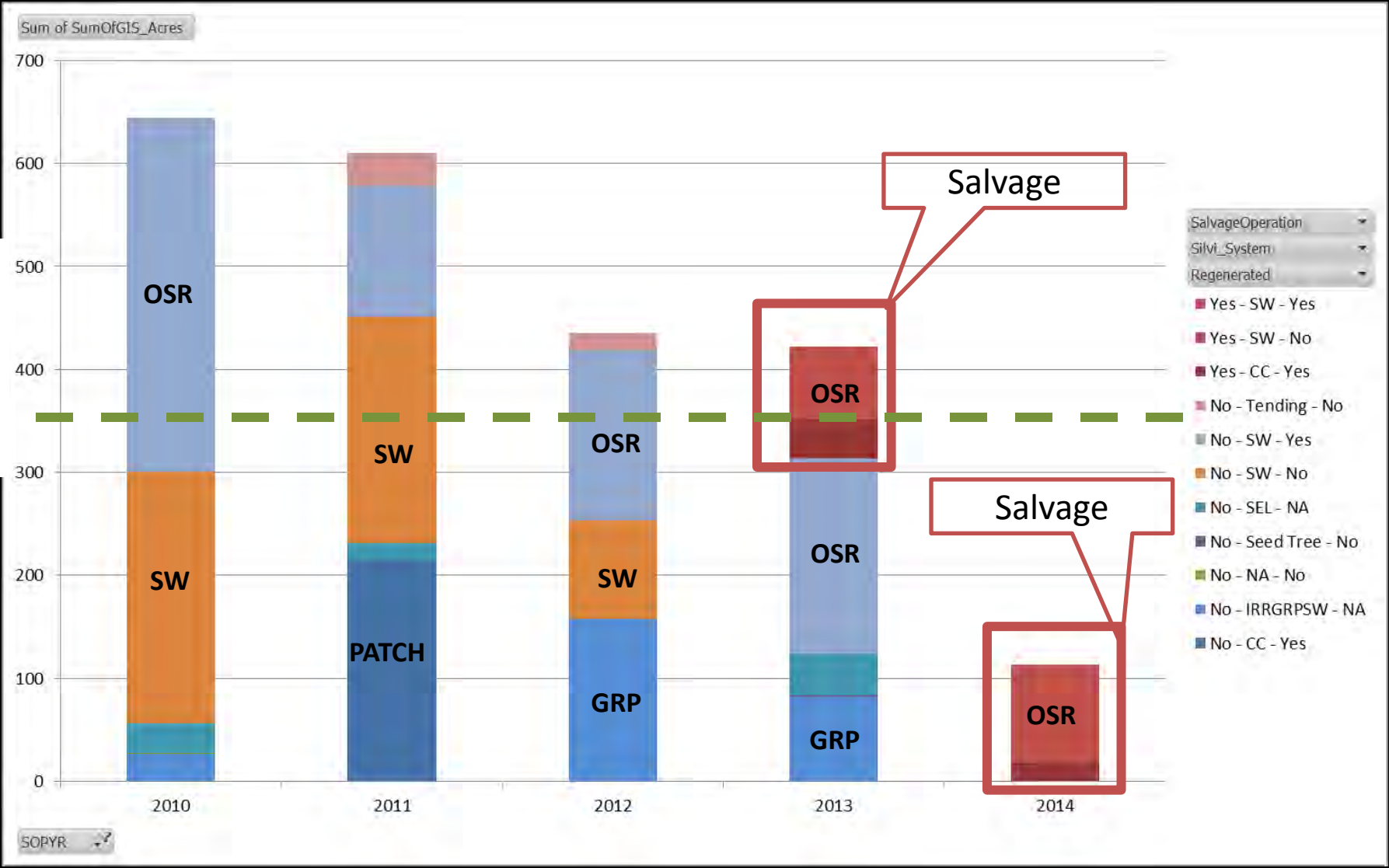


Baxter State Park SFMA Wood Markets 2013/14



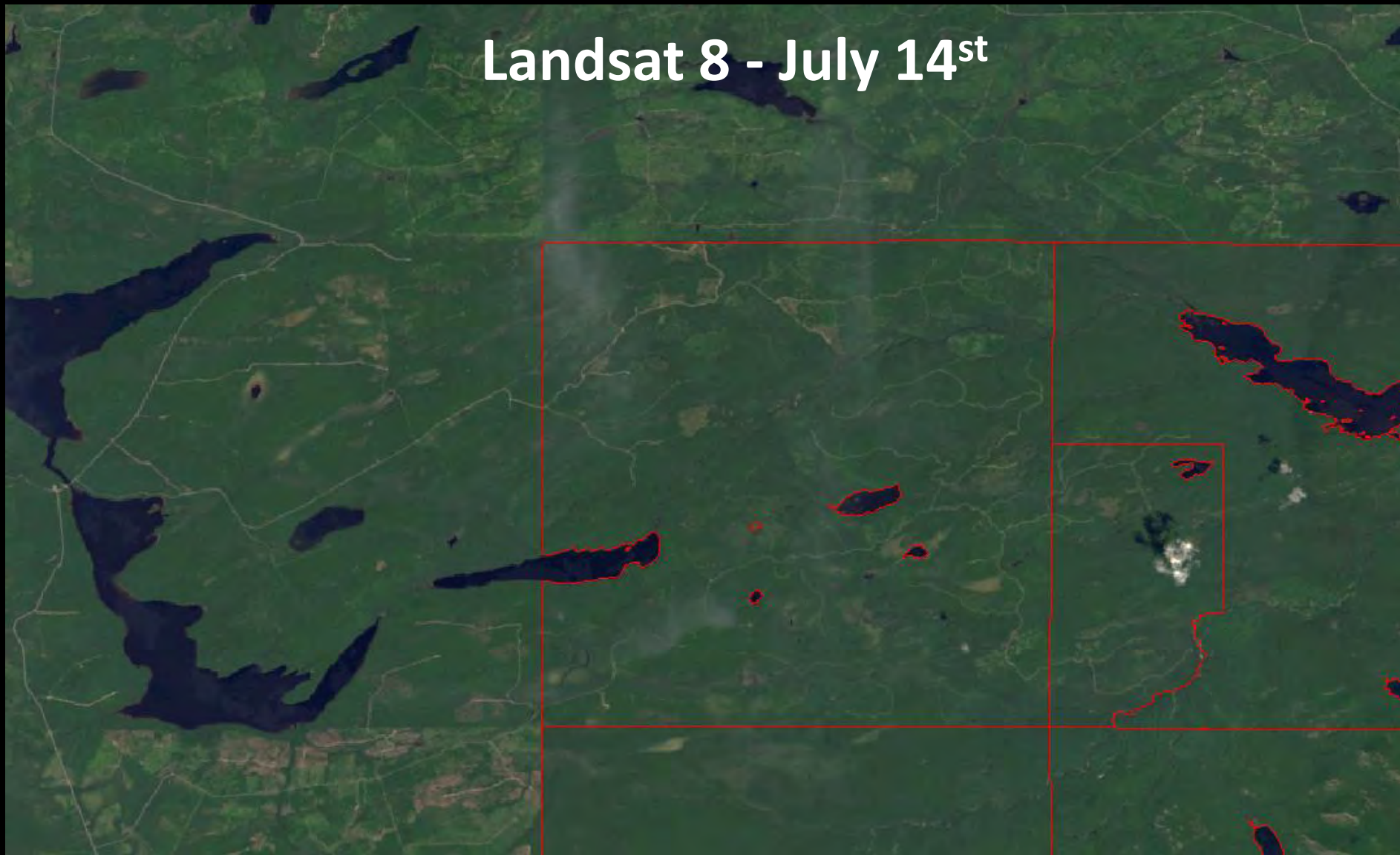
SFMA 5 Year Silviculture Treatment History Acres Treated by System

Treated Acres



Baxter State Park, ME

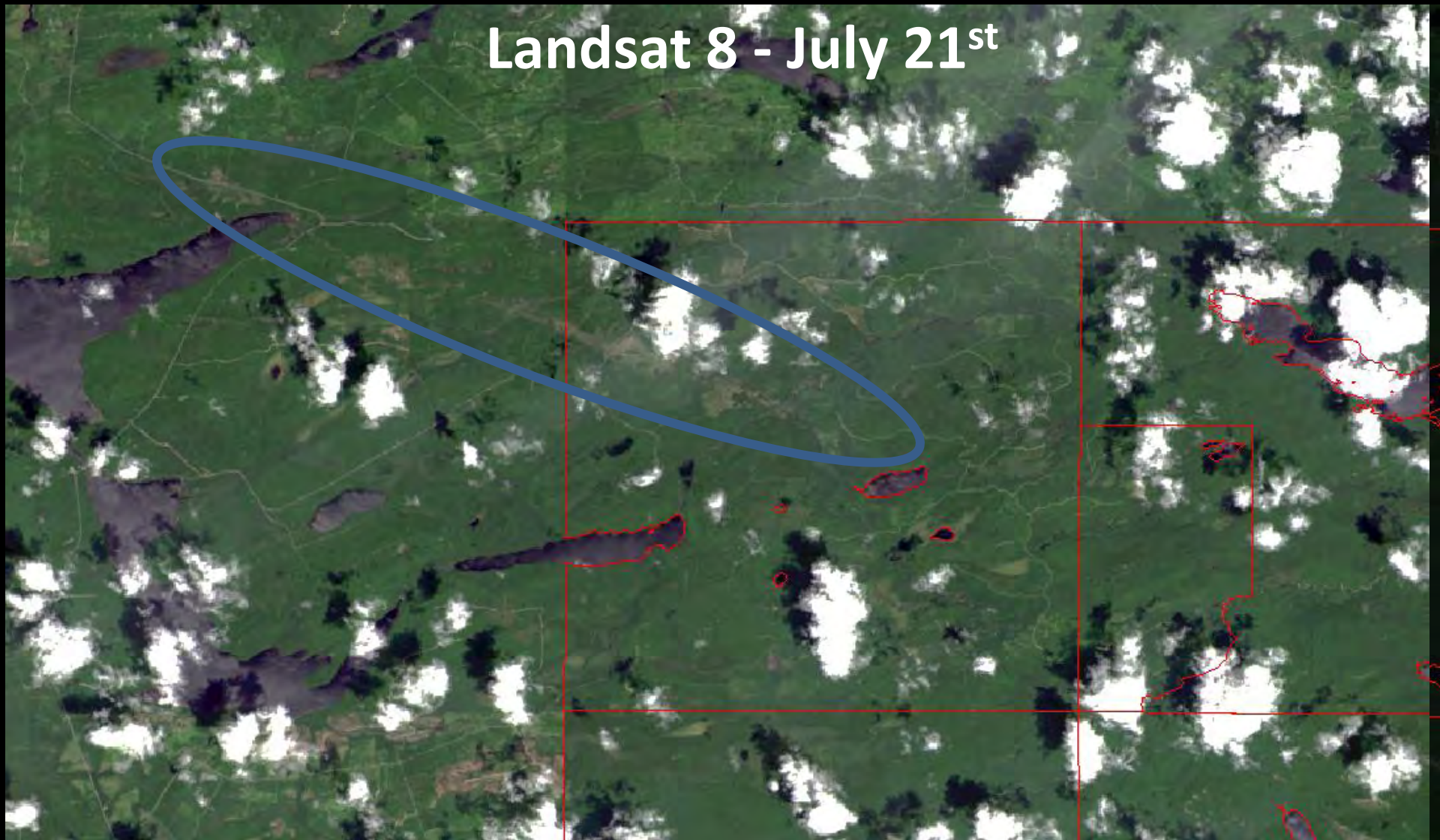
Landsat 8 - July 14st



Images courtesy of Ryan Hanavan, USFS

Baxter State Park, ME

Landsat 8 - July 21st



Blowdown Areas 2013 July

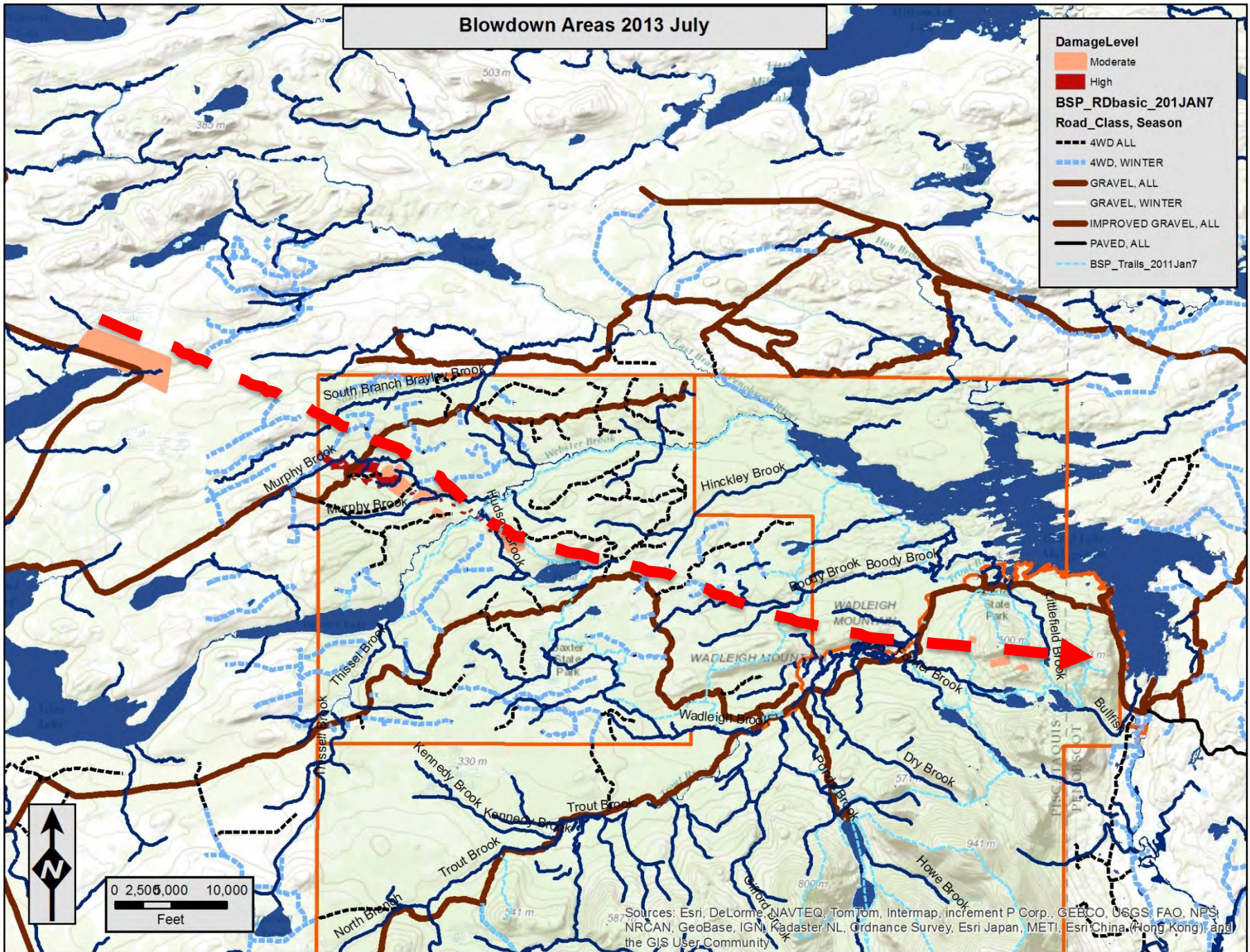
DamageLevel

- Moderate
- High

BSP_RDbasic_201JAN7

Road_Class, Season

- 4WD ALL
- 4WD, WINTER
- GRAVEL, ALL
- GRAVEL, WINTER
- IMPROVED GRAVEL, ALL
- PAVED, ALL
- BSP_Trails_2011Jan7



Sources: Esri, DeLorme, NAVTEQ, TomTom, Intermap, increment P Corp., GEBCO, USGS, FAO, NPS, NRCAN, GeoBase, IGN, Kadaster NL, Ordnance Survey, Esri Japan, METI, Esri China (Hong Kong), and the GIS User Community

Blowdown Areas 2013 July



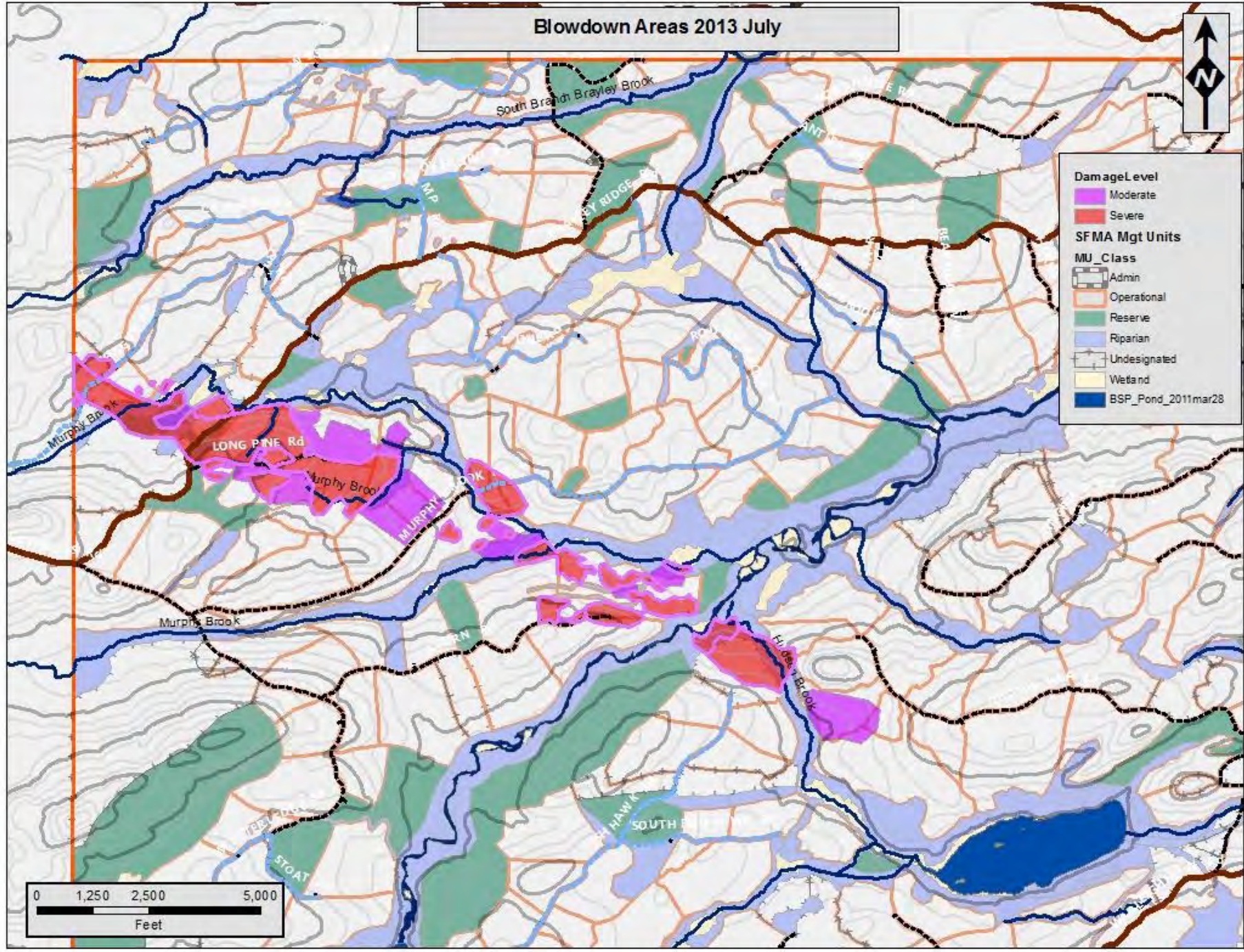
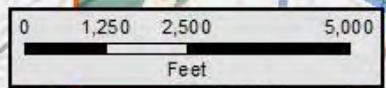
Damage Level

- Moderate
- Severe

SFMA Mgt Units

MU_Class

- Admin
- Operational
- Reserve
- Riparian
- Undesignated
- Wetland
- BSP_Pond_2011mar28



T North Aprx

Brayley Brk

Hagus Rd

Brayley Ridge Rd

BPL Boundary

Murphy Brk

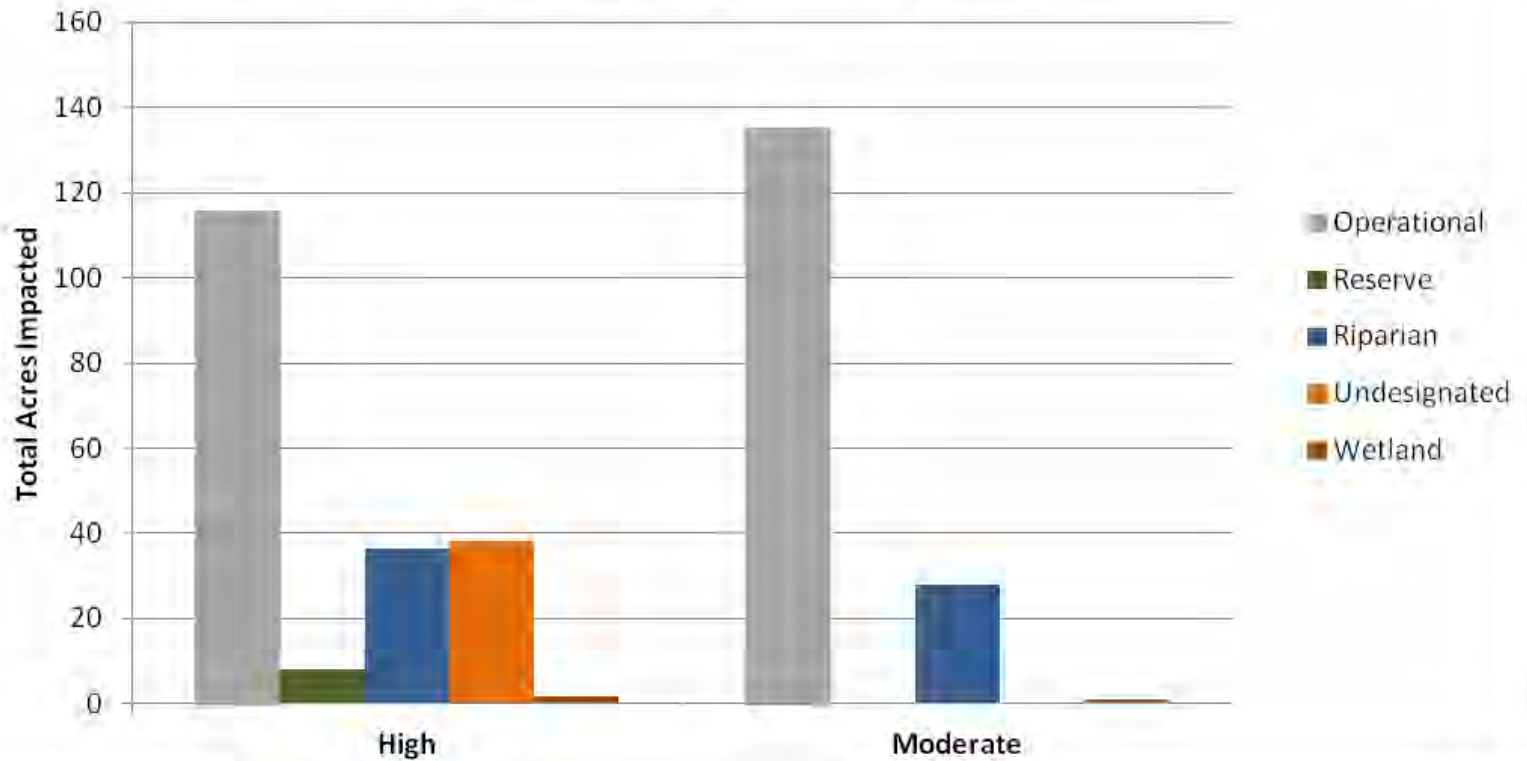
SFMA Boundary





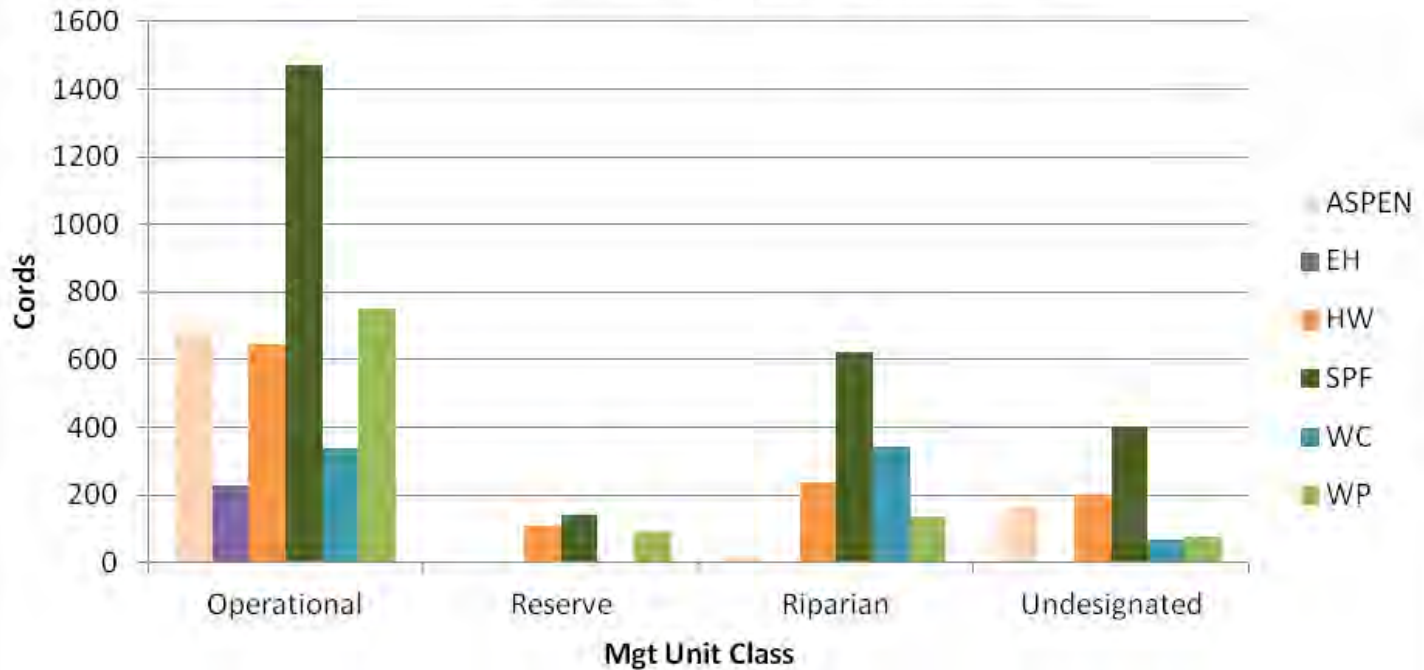
Photo by: Jim Hamlin

MU Class Acres by Damage Level



ImpactedGISAc	Operational	Reserve	Riparian	Undesignated	Wetland	Grand Total
High	116	8	36	38	2	200
Moderate	135		28		1	164
Grand Total	251	8	64	38	3	365

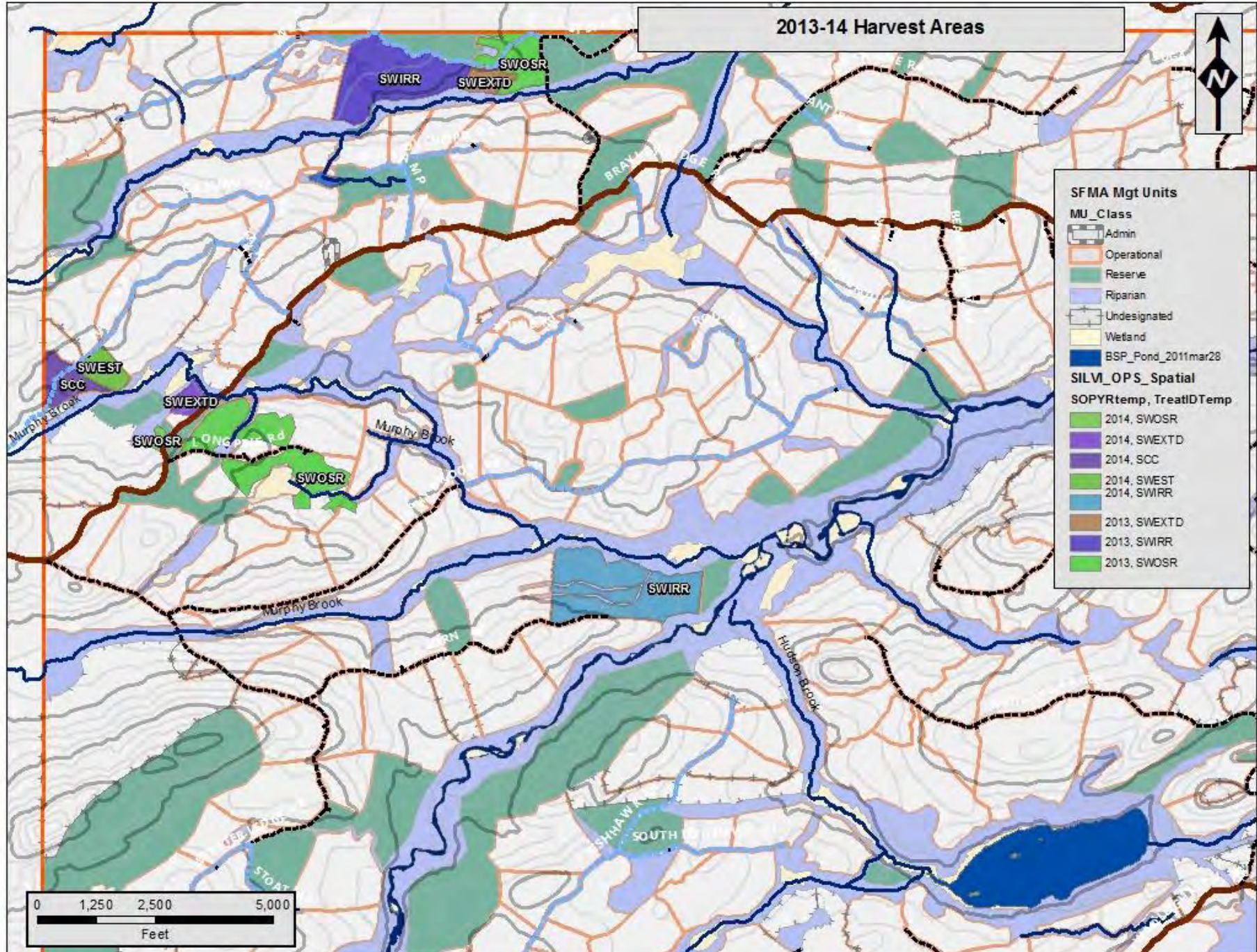
Estimated Total Cords of Wind Throw



Sum of TotalCordmu_D Colu							
Row Labels	ASPEN	EH	HW	SPF	WC	WP	Grand Total
Operational	686	228	643	1471	337	752	4116
Reserve			107	141		89	338
Riparian	23		239	621	344	137	1363
Undesignated	162		198	404	68	76	908
Grand Total	870	228	1187	2637	749	1054	6726



2013-14 Harvest Areas



SFMA Mgt Units

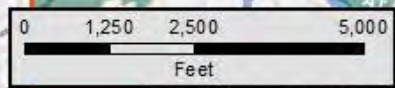
MU_Class

- Admin
- Operational
- Reserve
- Riparian
- Undesignated
- Wetland
- BSP_Pond_2011mar28

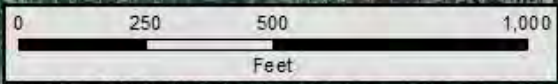
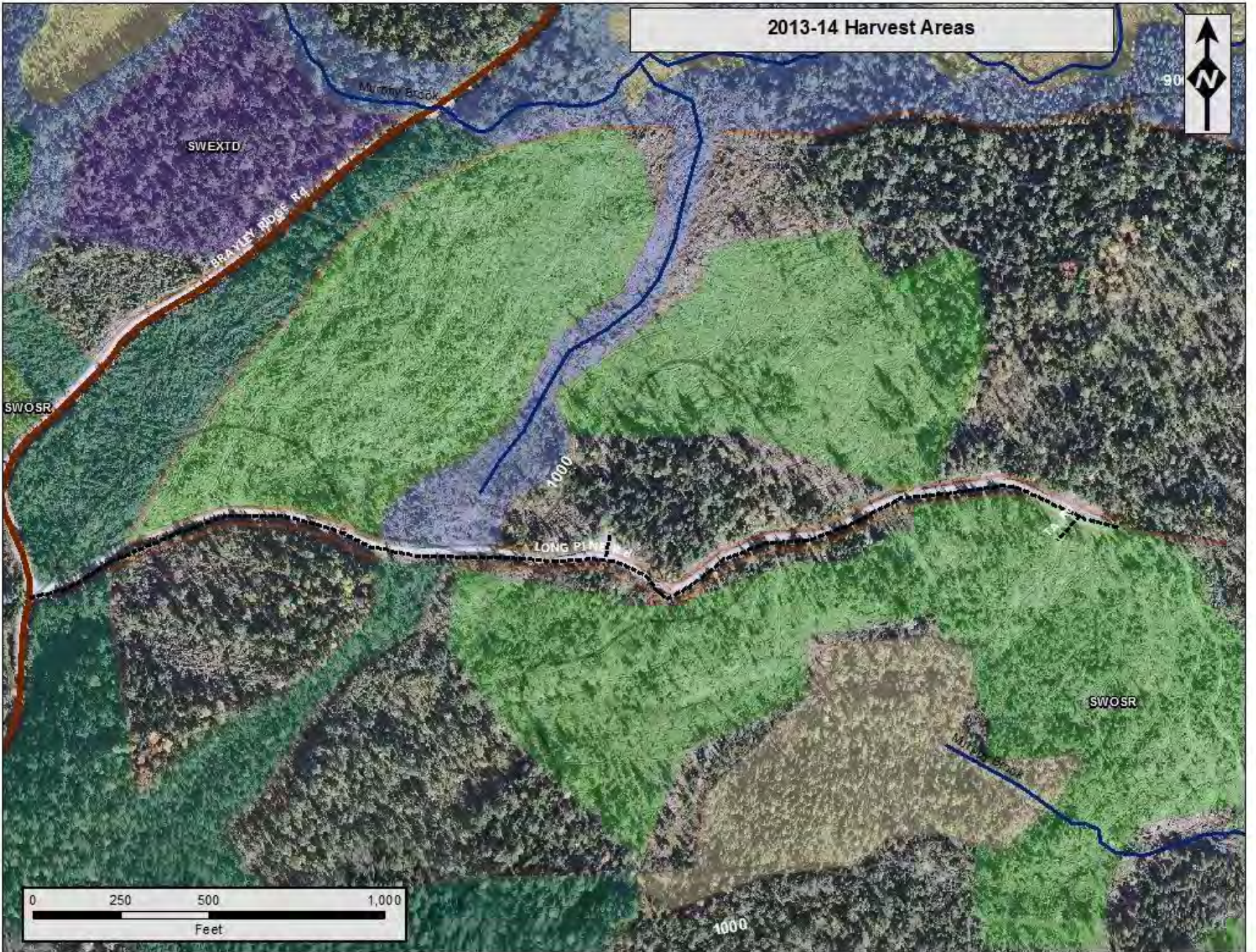
SILV_OPS_Spatial

SOPYRtemp, TreatIDTemp

- 2014, SWOSR
- 2014, SWEXTD
- 2014, SCC
- 2014, SWEST
- 2014, SWIRR
- 2013, SWEXTD
- 2013, SWIRR
- 2013, SWOSR



2013-14 Harvest Areas





Sign in



Google earth

1997

Imagery Date: 10/3/2013 46°11'30.71" N 69°03'49.44" W elev 975 ft eye alt 6083 ft



Sign in



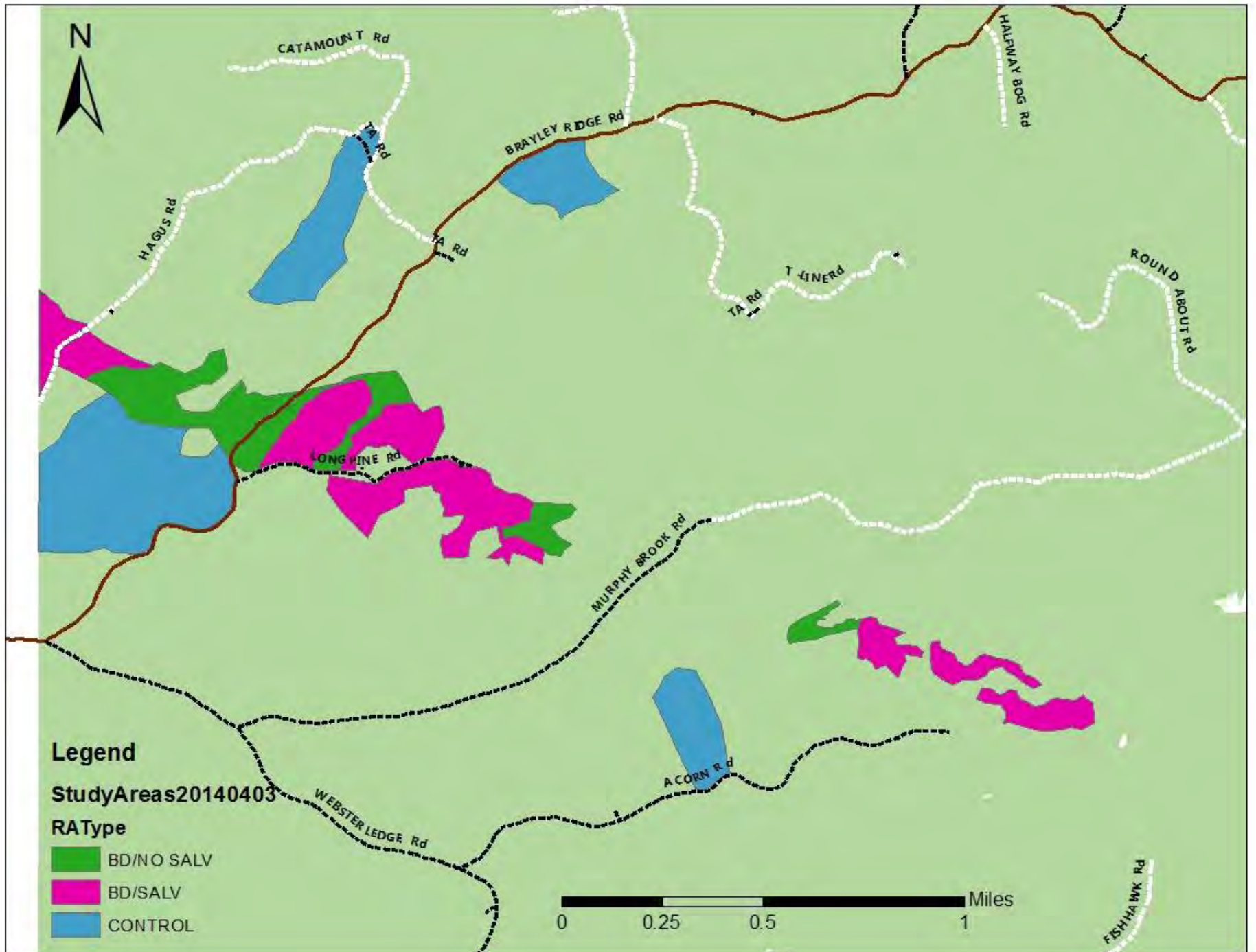
Google earth

1997

Imagery Date: 10/3/2013 46°11'23.57" N 69°03'42.99" W elev. 960 ft eye alt. 1443 ft

P 1





Current Research Projects

- UMaine Spruce Grouse (Harrison et al)
- Forest Birds Habitat (Loftin et al)
- Insect and Vegetation Responses to Blowdown and Salvage (Fraver et al)



Welcome to

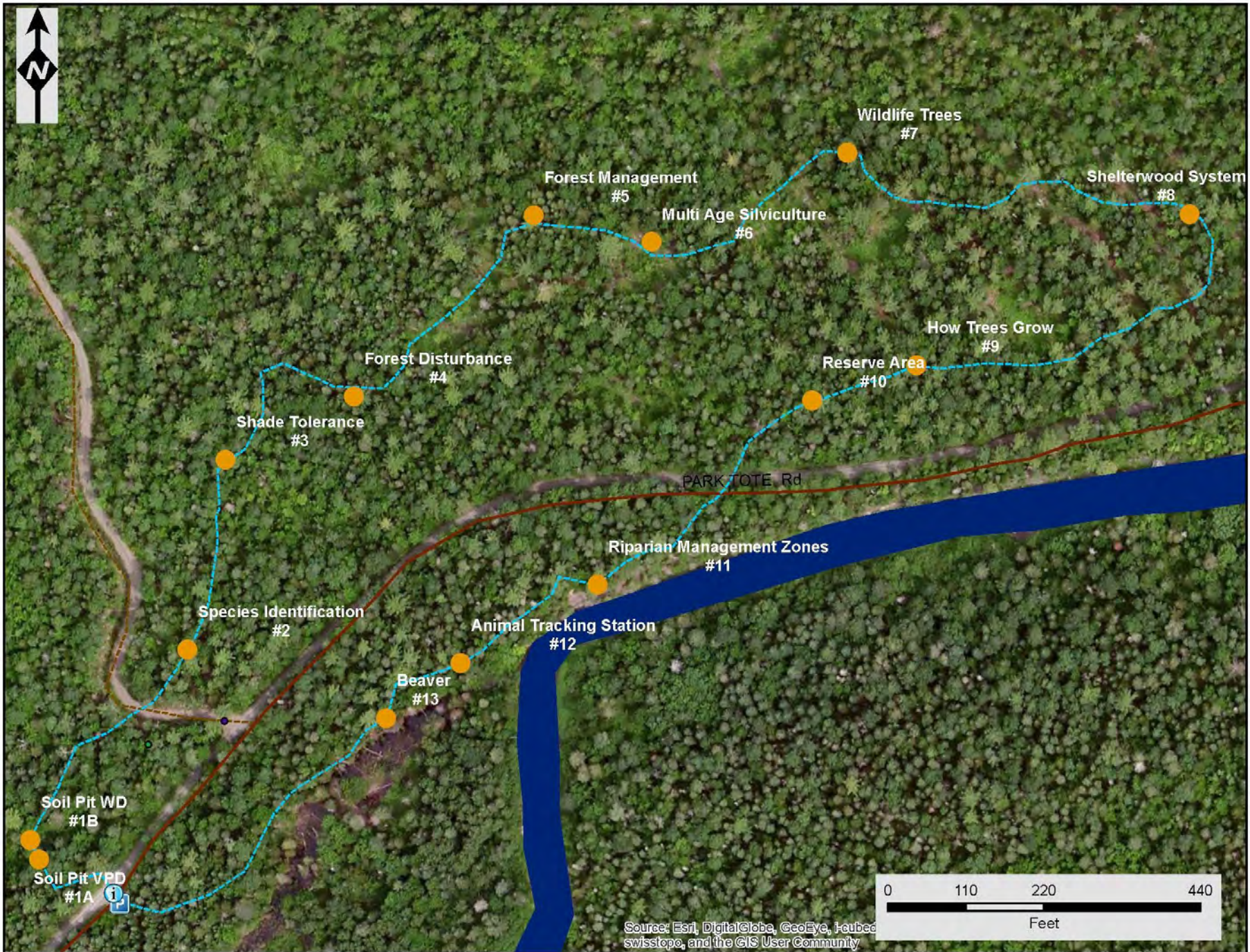


BAXTER STATE PARK

Scientific
Forest
Management
Area

"I want this township to become a show place for those interested in forestry..."
Percival P. Baxter, 1955





Source: Esri, DigitalGlobe, GeoEye, Iacube, swisstopo, and the GIS User Community




 Welcome to 
BAXTER STATE PARK
 Scientific
 Forest
 Management
 Area

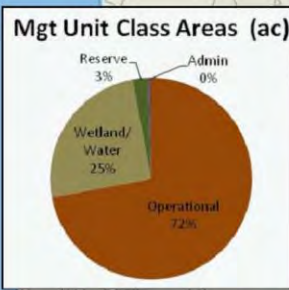
"I want this township to become a show place for those interested in forestry..."
 Percival P. Baxter, 1955



Planned SFMA Tours & Events 2014

- 5/21 –Tour with MFS staff SBW focus
- 6/27 –MESAF Tour blowdown event
- 7/16-17 –FSC Audit
- 7/22 –Public Tour Maine Woods Forever
- 7/23 –Evening Talk Daicey Pond CG
- 8/13 –Public Tour FE&M Trail (MaineWF)
- 8/24 –UMFK Forestry Field Camp Tour
- 9/6 –FBSP Tour
- 9/18 –SFMA Advisory Fall Field Tour
- 9/19 –Umaine Forestry Grad Course

BSP Austin Cary Forest
Harpswell, Maine



Map Key

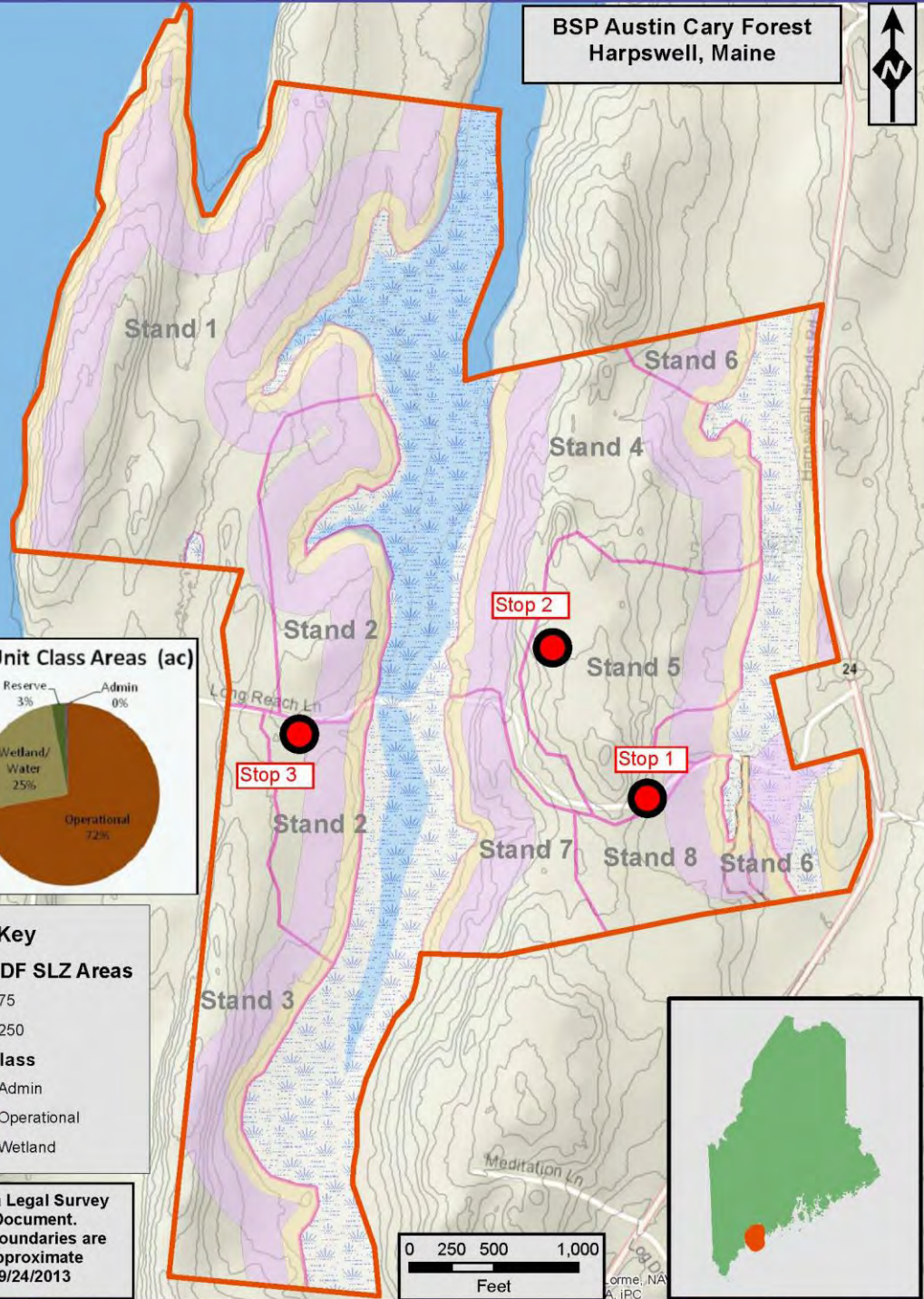
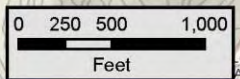
BSP_DF SLZ Areas

- 75
- 250

MU_Class

- Admin
- Operational
- Wetland

Not a Legal Survey Document.
All boundaries are approximate
9/24/2013





Pedro Guimaraes



Pedro Guimaraes



Pedro Guimaraes



Pedro Guimaraes



Pedro Guimaraes

facebook

Email or Phone: Password: [Log In](#)
 Keep me logged in [Forgot your password?](#)



Baxter State Park is on Facebook.
To connect with Baxter State Park, sign up for Facebook today.
[Sign Up](#) [Log In](#)



Baxter State Park
483 likes · 459 talking about this

Government Organization
Baxter State Park is over 200,000 acres of wilderness and public forest generously donated to the people of the State of Maine by Percival Baxter.

About



Photos



Likes



Events

Highlights ▾

Baxter State Park
9 hours ago

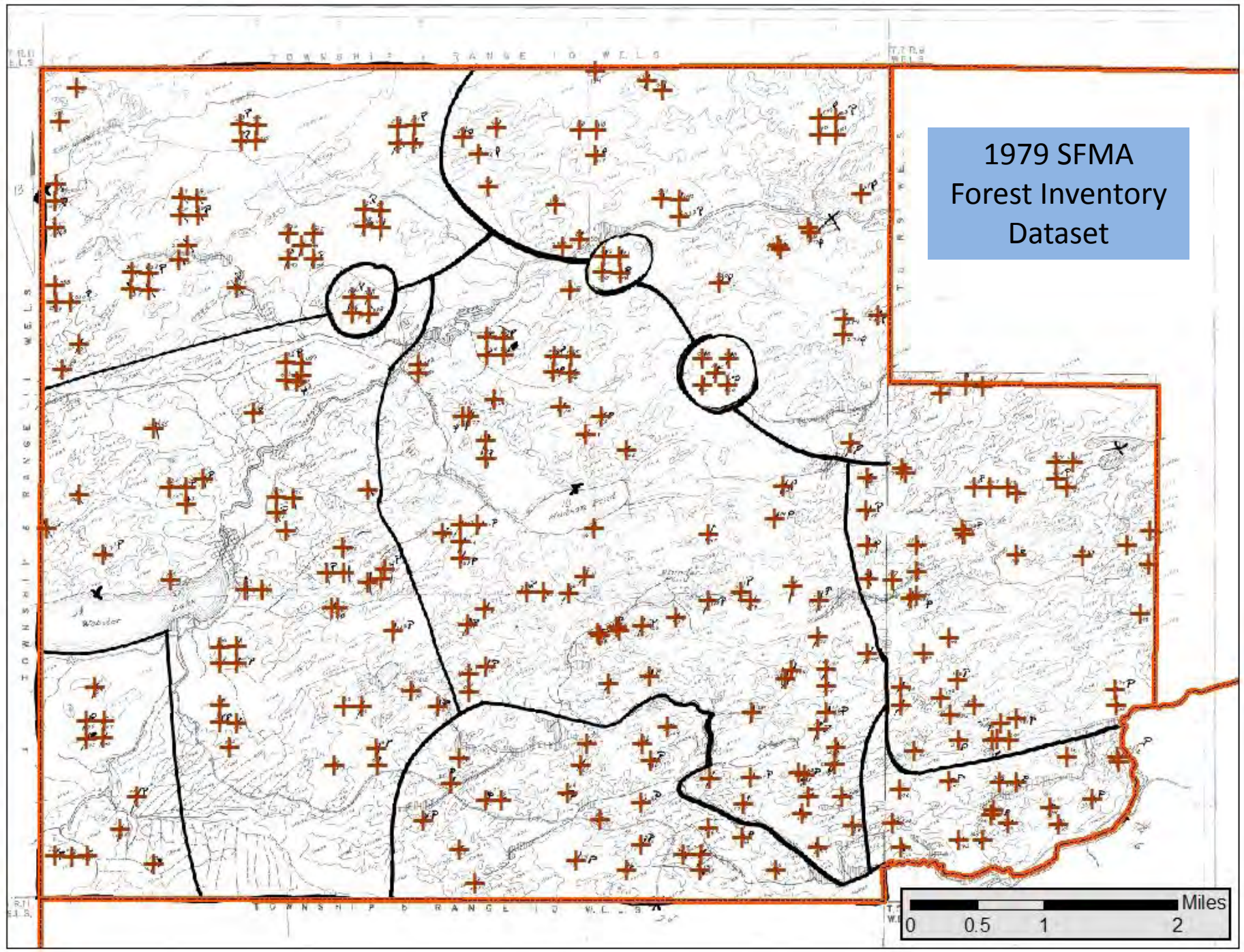
Rangers are now regularly inspecting Katahdin trails. This is the Tableland on April 29 and illustrates why we close trails during the spring. As the snow melts and frost leaves the ground, the trail treadway and rare alpine plants are susceptible to damage.

Recent Posts by Others on Baxter State Park [See All](#)

- John Gordon**
@ Moose, obeying the rules!
4 likes · April 25 at 4:29pm
- John Gordon**
@ The Mountain.
2 likes · April 25 at 4:25pm
- Tonya Bubar**
Can I add pics Nancy Guay?
2 likes · April 19 at 12:25pm

[More Posts](#)

1979 SFMA
Forest Inventory
Dataset



2013 SFMA
Available Forest
Inventory Data

