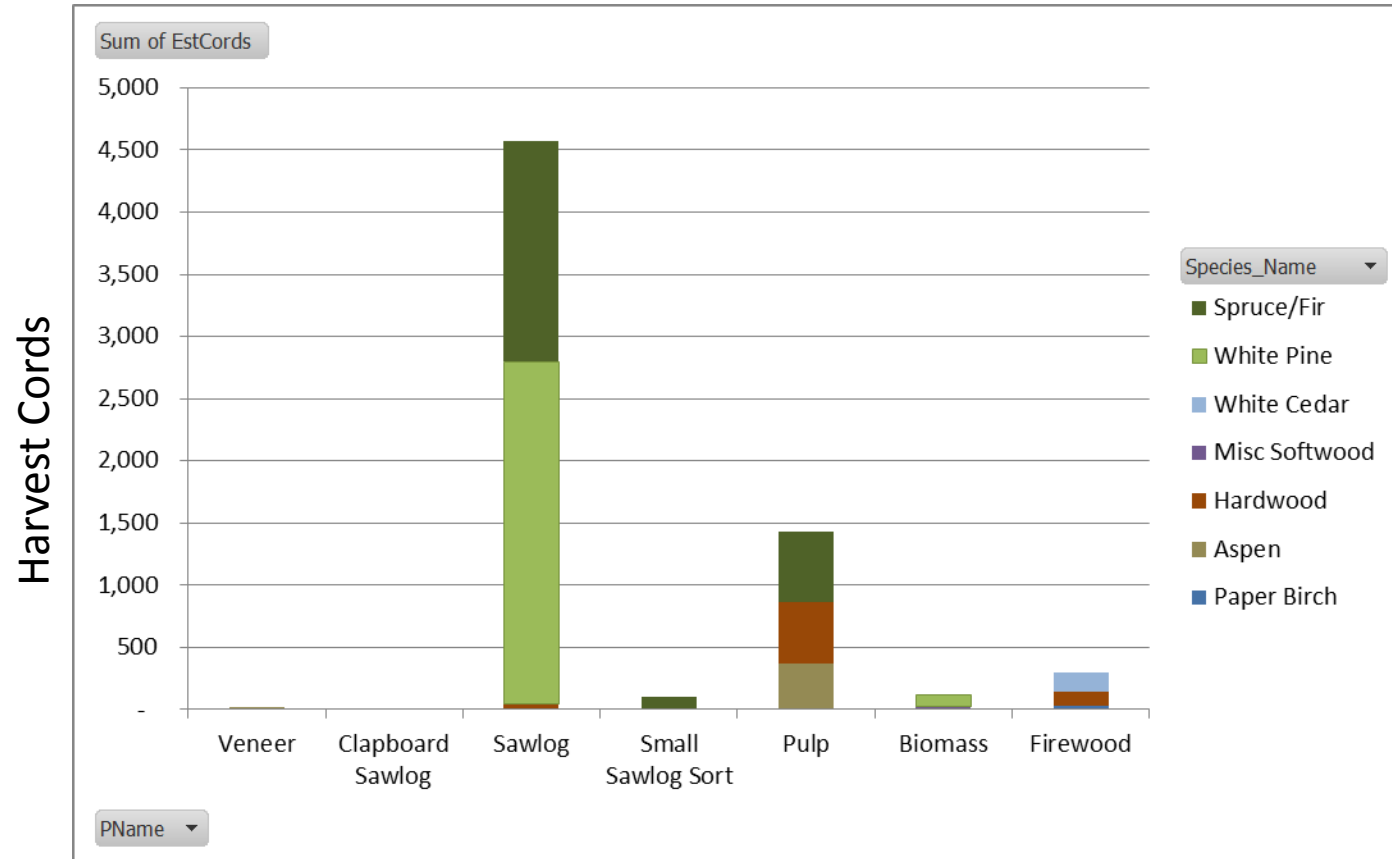


2013/14 Harvest Statistics		Version												
		5/6/2014												
Product Name	Species Name	Net Wt (LBS)	Net Vol (BF)	Cords	Gross Revenue	Service Payment	Bridge Tolls	Road Tolls	BSP Internal Use	*Net Revenue	Percent Net Revenue of Gross Rev	Percent Service Cost of Gross Rev	Percent Value Product Type	Percent Value All Products
Veneer	Aspen	70,780	6,525	16.5	\$ 2,446.88	\$1,476.47	\$7.08	\$89.54	N	\$873.79	36%	64%	0.4%	0%
Small Sawlog Sort	Spruce/Fir	448,220	0	105.5	\$ 14,567.15	\$9,712.93	\$44.82	\$640.95	N	\$4,168.45	29%	71%	1.9%	2%
Sawlog	Hardwood	229,940	9,263	46.0	\$ 5,000.00	\$4,679.28	\$22.99	\$286.70	N	\$11.03	0%	100%	0.0%	0%
Sawlog	Spruce/Fir	8,500	900	2.0	\$ 315.00	\$164.48	\$0.85	\$10.75	Y	\$138.92	44%	56%	0.1%	0%
Sawlog	Spruce/Fir	7,546,760	814,533	1,775.7	\$ 306,201.24	\$161,646.44	\$754.68	\$10,720.65	N	\$133,079.48	43%	57%	59.4%	60%
Sawlog	White Pine	11,832,376	1,172,718	2,751.7	\$ 393,324.22	\$291,550.60	\$1,183.24	\$15,964.63	N	\$84,625.74	22%	78%	37.8%	38%
Clapboard Sawlog	Spruce/Fir	44,800	4,444	10.5	\$ 2,225.69	\$911.68	\$4.48	\$64.06	N	\$1,245.47	56%	44%	0.6%	1%
Total Sawlog Values		20,181,376	2,008,383	4,707.9	\$ 724,080.17	\$ 470,141.87	\$ 2,018.14	\$ 27,777.29		\$224,142.87	4.13%	69.04%		
Pulp	Aspen	1,595,040	0	370.9	\$ 39,078.48	\$32,459.06	\$159.50	\$1,842.27	N	\$4,617.64	12%	88%	-539.0%	2%
Pulp	Hardwood	2,443,970	0	488.8	\$ 52,027.61	\$49,306.92	\$100.85	\$1,751.08	N	\$868.76	2%	98%	-101.4%	0%
Pulp	Spruce/Fir	2,446,900	0	575.7	\$ 62,395.95	\$60,733.07	\$244.69	\$3,487.01	N	(\$2,068.81)	-3%	103%	241.5%	-1%
Biomass	Misc Softwood	92,610	0	21.4	\$ 1,203.93	\$1,884.61	\$9.26	\$122.25	N	(\$812.19)	-67%	167%	94.8%	0%
Biomass	White Cedar	10,650	0	3.0	\$ 138.45	\$216.73	\$1.07	\$14.06	N	(\$93.40)	-67%	167%	10.9%	0%
Biomass	White Pine	403,610	0	93.9	\$ 5,246.93	\$8,051.35	\$40.36	\$523.94	N	(\$3,368.72)	-64%	164%	393.2%	-2%
Total Pulp Values		6,992,780		1,553.8	\$ 160,091.35	\$ 152,651.74	\$ 555.73	\$ 7,740.60		(\$856.73)	0.11%	100.54%	100.00%	
Firewood	Hardwood	575,300	0	115.1	\$ 13,346.70	\$11,584.16	\$57.53	\$755.23	Y	\$949.79	7%	93%	-88%	0%
Firewood	Paper Birch	140,000	0	31.1	\$ 3,239.60	\$2,709.00	\$14.00	\$193.73	Y	\$322.87	10%	90%	-38%	0%
Firewood	White Cedar	543,000	0	155.1	\$ 9,307.02	\$10,899.05	\$54.30	\$704.22	Y	(\$2,350.55)	-25%	125%	218%	-1%
Total Misc Product Values		1,258,300		301.3	\$ 25,893.32	\$ 25,192.21	\$ 125.83	\$ 1,653.18		(\$1,077.89)	-3%	104%	126%	
Total All Product Values		28,432,456	2,008,383	6,563.0	\$ 910,064.84	\$ 647,985.82	\$ 2,699.70	\$ 37,171.07		\$222,208.25	2%	76%		
Total All Product Values less BSP		28,432,456	2,008,383	6,563	\$ 884,171.52	\$ 647,985.82	\$ 2,699.70	\$ 37,171.07		\$197,392.83	6%	78%		

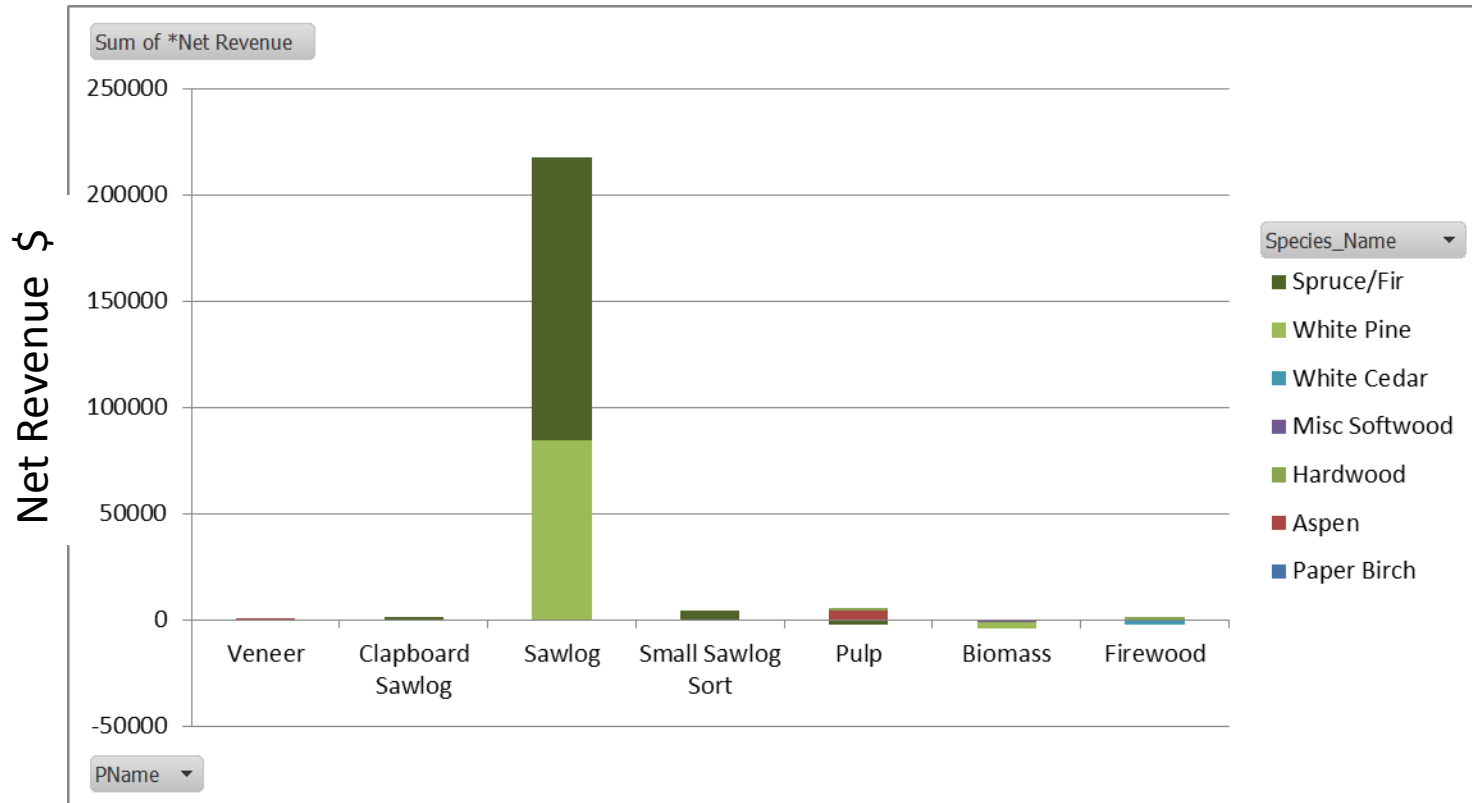
2013/14 Harvest Statistics		Version									
		5/6/2014									
Product Name	Species Name	Gross Rev/Cord	Service Cost /Cord	Toll Cost/Cord	Net Rev/Cord	Gross Rev/MBF	Net Rev/MBF	Gross Rev/Ton	Service Cost /Ton	Toll Cost/Ton	Net Rev/Ton
Veneer	Aspen	\$148.65	\$89.70	\$5.87	\$53.08	\$375.00	\$133.91	\$69.14	\$41.72	\$2.73	\$24.69
Small Sawlog Sort	Spruce/Fir	\$138.13	\$92.10	\$6.50	\$39.53			\$65.00	\$43.34	\$3.06	\$18.60
Sawlog	Hardwood	\$108.72	\$101.75	\$6.73	\$0.24	\$539.79	\$1.19	\$43.49	\$40.70	\$2.69	\$0.10
Sawlog	Spruce/Fir	\$157.50	\$82.24	\$5.80	\$69.46	\$350.00	\$154.36	\$74.12	\$38.70	\$2.73	\$32.69
Sawlog	Spruce/Fir	\$172.44	\$91.03	\$6.46	\$74.94	\$375.92	\$163.38	\$81.15	\$42.84	\$3.04	\$35.27
Sawlog	White Pine	\$142.94	\$105.95	\$6.23	\$30.75	\$335.40	\$72.16	\$66.48	\$49.28	\$2.90	\$14.30
Clapboard Sawlog	Spruce/Fir	\$211.14	\$86.49	\$6.50	\$118.15	\$500.83	\$280.26	\$99.36	\$40.70	\$3.06	\$55.60
Total Sawlog Values		\$153.80	\$99.86	\$6.33	\$47.61			\$71.76	\$46.59	\$2.95	\$22.21
Pulp	Aspen	\$105.35	\$87.51	\$5.40	\$12.45			\$49.00	\$40.70	\$2.51	\$5.79
Pulp	Hardwood	\$106.44	\$100.87	\$3.79	\$1.78			\$42.58	\$40.35	\$1.52	\$0.71
Pulp	Spruce/Fir	\$108.38	\$105.49	\$6.48	(\$3.59)			\$51.00	\$49.64	\$3.05	(\$1.69)
Biomass	Misc Softwood	\$56.29	\$88.12	\$6.15	(\$37.97)			\$26.00	\$40.70	\$2.84	(\$17.54)
Biomass	White Cedar	\$45.50	\$71.23	\$4.97	(\$30.70)			\$26.00	\$40.70	\$2.84	(\$17.54)
Biomass	White Pine	\$55.90	\$85.78	\$6.01	(\$35.89)			\$26.00	\$39.90	\$2.80	(\$16.69)
Total Pulp Values		\$103.03	\$98.25	\$5.34	(\$0.55)			\$45.79	\$43.66	\$2.37	(\$0.25)
Firewood	Hardwood	\$116.00	\$100.68	\$7.06	\$8.25			\$46.40	\$40.27	\$2.83	\$3.30
Firewood	Paper Birch	\$104.13	\$87.08	\$6.68	\$10.38			\$46.28	\$38.70	\$2.97	\$4.61
Firewood	White Cedar	\$59.99	\$70.25	\$4.89	(\$15.15)			\$34.28	\$40.14	\$2.79	(\$8.66)
Total Misc Product Values		\$85.93	\$83.61	\$5.90	(\$3.58)			\$41.16	\$40.04	\$2.83	(\$1.71)
Total All Product Values		\$138.67	\$98.73	\$6.08	\$33.86			\$64.02	\$45.58	\$2.80	\$15.63
Total All Product Values		\$134.72	\$98.73	\$6.08	\$30.08			\$62.19	\$45.58	\$2.80	\$13.89

2013/14 Harvest Volume by Species/Product



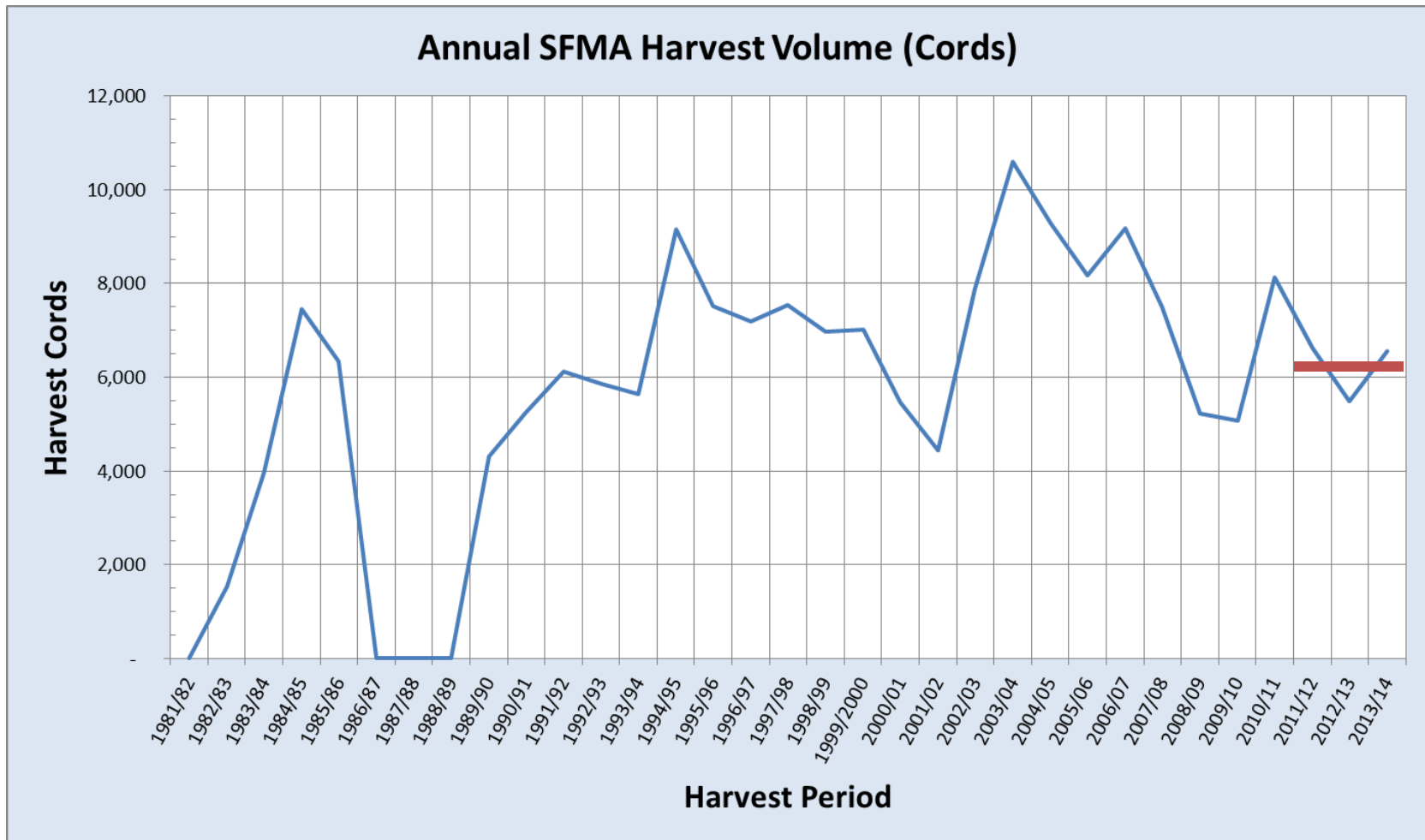
Row Labels	Paper Birch	Aspen	Hardwood	Misc Softwood	White Cedar	White Pine	Spruce/Fir	Grand Total
Veneer		16						16
Clapboard Sawlog							11	11
Sawlog			46			2,752	1,778	4,575
Small Sawlog Sort							105	105
Pulp		371	489				576	1,435
Biomass				21	3	94		118
Firewood	31		115		155			301
Grand Total	31	387	650	21	158	2,846	2,469	6,563

2013/14 Harvest Net Revenue by Species/Product

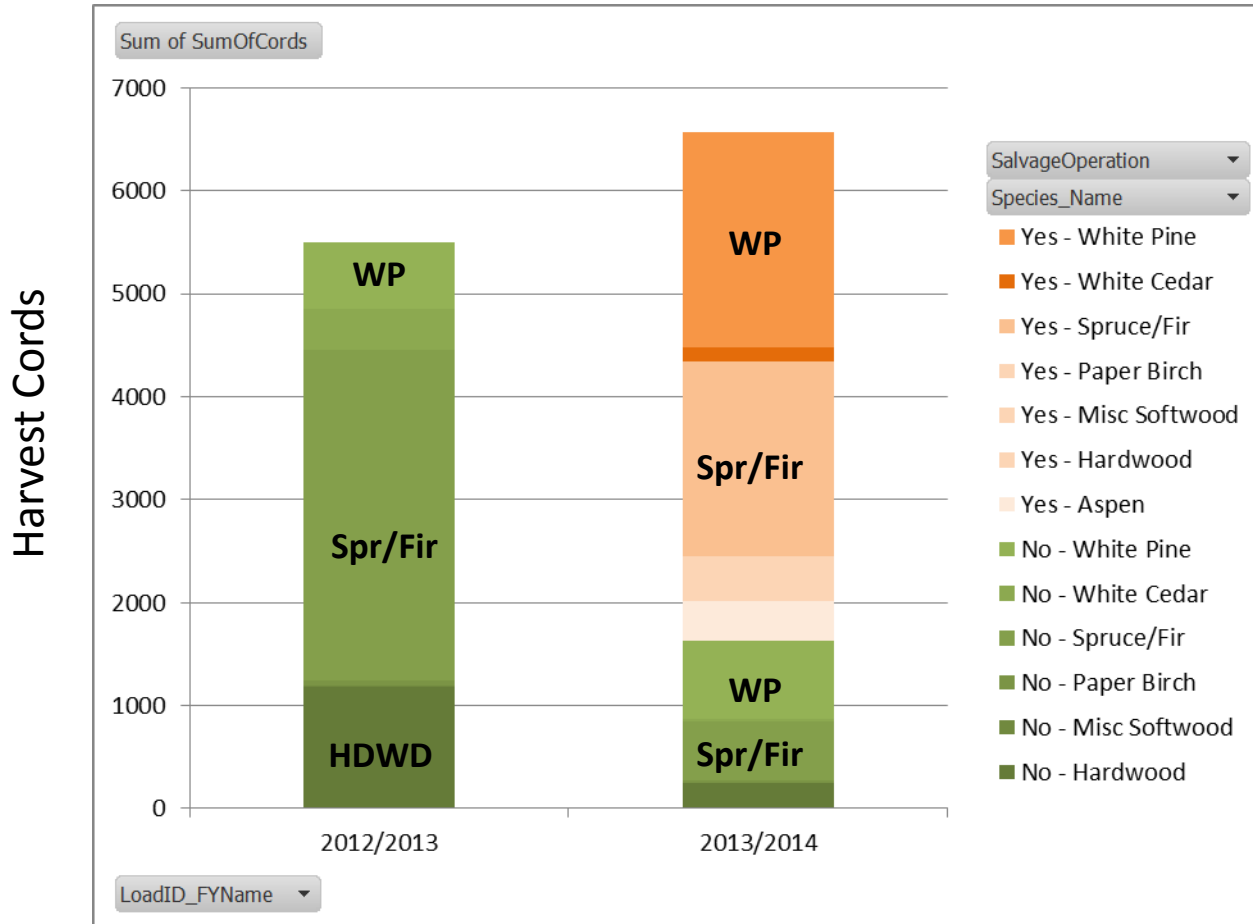


Row Labels	Paper Birch	Aspen	Hardwood	Misc Softwood	White Cedar	White Pine	Spruce/Fir	Grand Total
Veneer		\$ 873.79						\$ 873.79
Clapboard Sawlog							\$ 1,245.47	\$ 1,245.47
Sawlog			\$ 11.03			\$ 84,625.74	\$ 133,218.40	\$ 217,855.17
Small Sawlog Sort							\$ 4,168.45	\$ 4,168.45
Pulp		\$ 4,617.64	\$ 868.76				\$ (2,068.81)	\$ 3,417.59
Biomass				\$ (812.19)	\$ (93.40)	\$ (3,368.72)		\$ (4,274.31)
Firewood	\$ 322.87		\$ 949.79		\$ (2,350.55)			\$ (1,077.89)
Grand Total	\$ 322.87	\$ 5,491.43	\$ 1,829.57	\$ (812.19)	\$ (2,443.95)	\$ 81,257.02	\$ 136,563.50	\$ 222,208.25

Harvest Period	Total Harvest (Cords)
1981/82	-
1982/83	1,538
1983/84	3,968
1984/85	7,449
1985/86	6,338
1986/87	-
1987/88	-
1988/89	-
1989/90	4,305
1990/91	5,244
1991/92	6,124
1992/93	5,861
1993/94	5,646
1994/95	9,155
1995/96	7,511
1996/97	7,191
1997/98	7,546
1998/99	6,976
1999/2000	7,015
2000/01	5,461
2001/02	4,443
2002/03	7,898
2003/04	10,588
2004/05	9,278
2005/06	8,163
2006/07	9,185
2007/08	7,502
2008/09	5,232
2009/10	5,070
2010/11	8,127
2011/12	6,624
2012/13	5,497
2013/14	6,563
Total	191,495
Avg	5,803
Max	10,588
Min	1,538

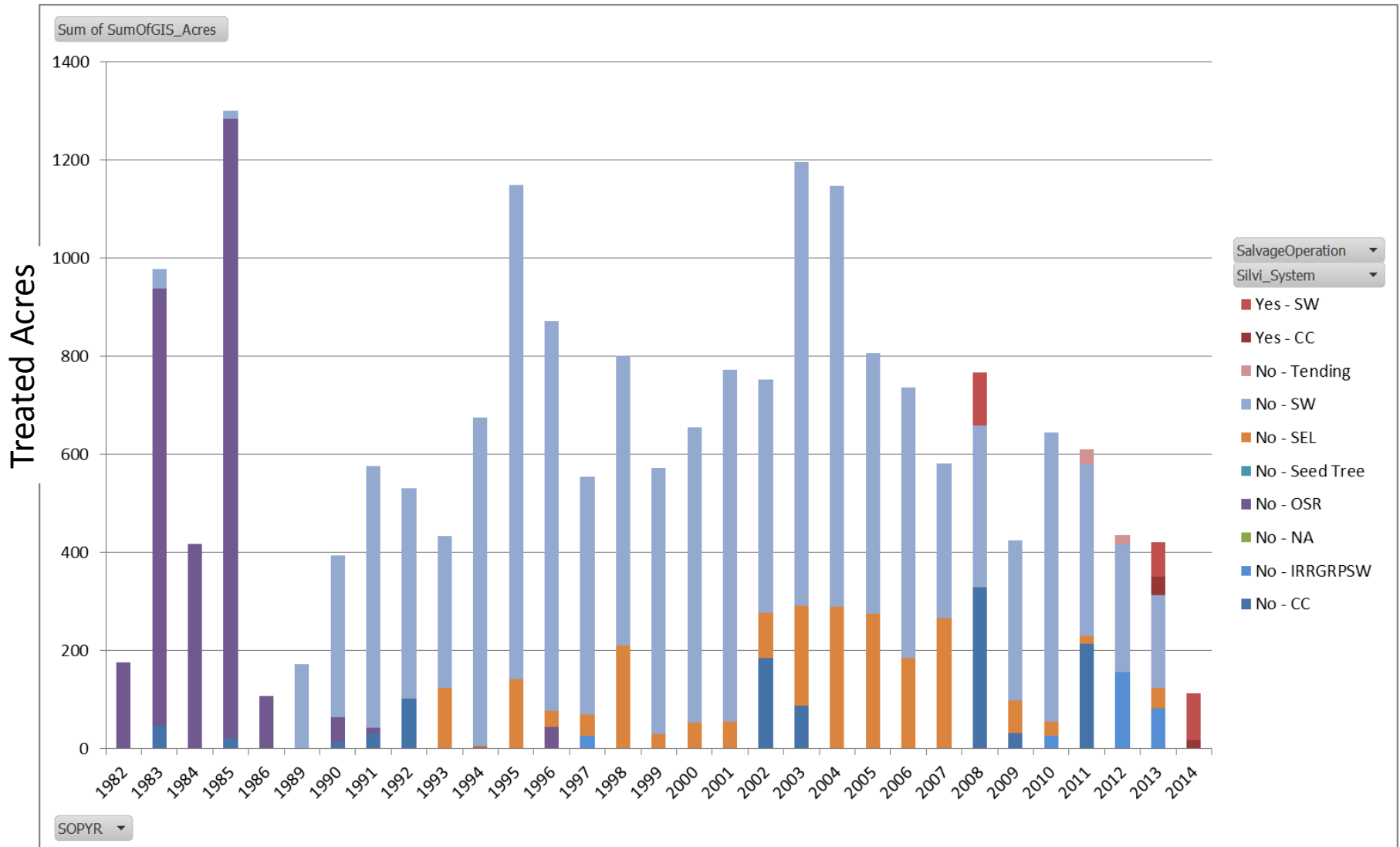


2012/13 & 2013/14 Harvest Volume by Species and Salvage Op



SFMA Silviculture Treatment History

Acres Treated by System



SFMA 5 Year Silviculture Treatment History

Acres Treated by System

